

FAIRBANKS INTERNATIONAL AIRPORT

Fairbanks International Airport Update

GAA April 2026

To Keep Alaska Flying and Thriving

FAI Update Overview

- Leasing/Tiedowns
- Maintenance/Hard Pack Reminders
- Operations/Gate Bravo & Know Before
- Engineering/Construction Updates



Tiedowns

Current TIEDOWN Stats

As of April 15, 2026

TIEDOWN	TOTAL SPACES			
	Excluding "Not Available to Rent"	TRANSIENT	RENTABLE	VACANCIES
BE (Paved Push Back w/ Power)	87	9	78	5
BN (Paved Push Back)	54	9	45	11
FP (Float Pond)	176	4	172	35
TE (Paved Taxi Thru w/ Power)	94	8	86	0
TN (Paved Taxi Thru)	9	0	9	0
UN (Unpaved Push Back)	19	0	19	0
TOTALS:	439	30	409	51



- Taxi-Thru with electric has 17-person waitlist
- Taxi-Thru w/o electric has 4-person waitlist

Tiedown Agreement Reminders

Prohibited items:

Storage of vehicles is prohibited

Storage of boats is prohibited (unless needed for aircraft operations)

Campers/enclosed trailers (not used for transporting aircraft skis or floats) prohibited

Snow machines, ATVs, or other machines/vehicles not used for aircraft operations

Allowed items:

Picnic tables and benches

Trailers used to transport airplane skis or floats

Portable storage boxes

Sheds

Vehicles allowed when aircraft in air, or tenant on lot



Fees:

Payable semiannually in advance on or before June 30 and December 31

Additional Information:

https://dot.alaska.gov/faiiap/aircraft_parking.shtml

Tiedown Regulation Changes

- ➔ As part of the Governor's Administrative Order 360 Regulatory Reform effort, AIAS proposes Chapter 42 Articles 5 (ANC) & 6 (FAI) be combined to streamline regulations, eliminate requirements that are unenforceable, and be more understandable.
- ➔ The AIAS Team will consider all comments received through public meetings & various Administrative Order 360 Request For Inputs and make updates as applicable
- ➔ AIAS's goal is to have a formal package provided to State of Alaska LAW by early June. Once reviewed by LAW, additional public meetings will be held to review the proposed regulation.
- ➔ Current FAI Regs can be found at <https://www.akleg.gov/basis/aac.asp#17.42.600>

Tiedown Reg Changes Cont'd

LESS BARRIERS/REGULATIONS

- Remove requirements for Notary on Tiedown Permit Application
- Remove requirement for proving aircraft basing & certain unenforceable aircraft activity requirements
- Remove sections that explain how to fill out application form (propose instructions are only on form)
- Remove medical certificate requirement
- Provides compliance options for minor infractions prior to loss of permit from 1 year to 2 years per airport manager discretion

MORE EASILY UNDERSTOOD

- Clearly defines basic terms not spelled out in current regulation: assignment, priority, cancellation, renewal.
- Reduces multiple cross references (e.g. see paragraph xx or 17 AAC xx.xx)

DIFFERENCES BETWEEN ANC & FAI:

- ANC: Seaplane Rating for Water Tiedowns *17 AAC 42.520(b)(4)(A) / 17 AAC 42.520(c)(2)(A)*
- ANC: has ski season time limitation for Ice Tiedown *17 AAC 42.520(f)(2)*
- Switch List Procedures only at ANC *17 AAC 42.540*
- Waitlist Procedures at ANC requires list available to public *17 AAC 42.550(c)*

East Ramp Hardpack

- Charlie – south end to Yankee, asphalt year around.
 - Pack removal – Temperature dependent, goal is to maximize access for both wheeled users and Ski users for as long as conditions allow.
 - Pack removal – typically begins on the south end of the east ramp to benefit high volume of wheeled users. Progress north on Charlie, Delta and taxi lanes between rows from south to North. All weather and temperature permitting.
 - Access is primary driver in decisions of removing pack, but also must consider removing pack prior to the melt getting away from us and we have significant icing on the east ramp which is very difficult to remove.
- **Avoid using Delta as a full-length travel lane in soft spring conditions. Leads to excessive rutting which impacts aircrafts ability to navigate that area. Use University South to get as close to the area needing accessed as possible.



Taxiway Bravo Gate

- Piggybacking on another users key is not acceptable and can lead to damage to the gate or your aircraft
- Rekey mike 5x to reset 60 second hold open delay
- When gate closure cycle is imminent amber lights will flash on gate frame
- **Do not attempt to beat the closure**
- Do not rely on photo eye to activate if closure is imminent
- Updated Ops Orders 5.3 related to Gate Bravo for recent incidents.



Know Before You Go

Pilots: When repositioning on the East Ramp give Ground Control a courtesy call on 121.9

**Aircraft Transient Parking Available!
Contact Reef Parking for Rates
(907) 455-4571**



Created in cooperation with the
Fairbanks General Aviation Association

FAI East Ramp Orientation & Safety Information

Welcome to the Fairbanks East Ramp:
The East Ramp is an Aircraft Operations Area.
Access is limited to east side tenants,
transient pilots, escorted guests and other
persons authorized by Airport Management.

For information regarding access to this area
call (907) 474-2530



Get a copy of this info
on your mobile device!



@FairbanksInternationalAirport



@Fly_Fairbanks

FAA Tower Clearance is Required Before Crossing

B 4-22

CONTROLLED ACCESS AREA
DO NOT PASS THIS POINT WITHOUT FAA TOWER CLEARANCE

Fairbanks Airport
Speed Limit
MAXIMUM 20 MPH

SPEED LIMIT 20

YIELD TO AIRCRAFT

Keep in mind that an aircraft may be behind you

REPORT HAZARDOUS WILDLIFE TO
AIRCRAFT COMMUNICATIONS
(907) 474-2530

KEEP DOGS AND AIRCRAFT SAFE!



AIRCRAFT AND LOOSE DOGS ARE A DEADLY COMBINATION

DOGS MUST BE RESTRAINED AT ALL TIMES

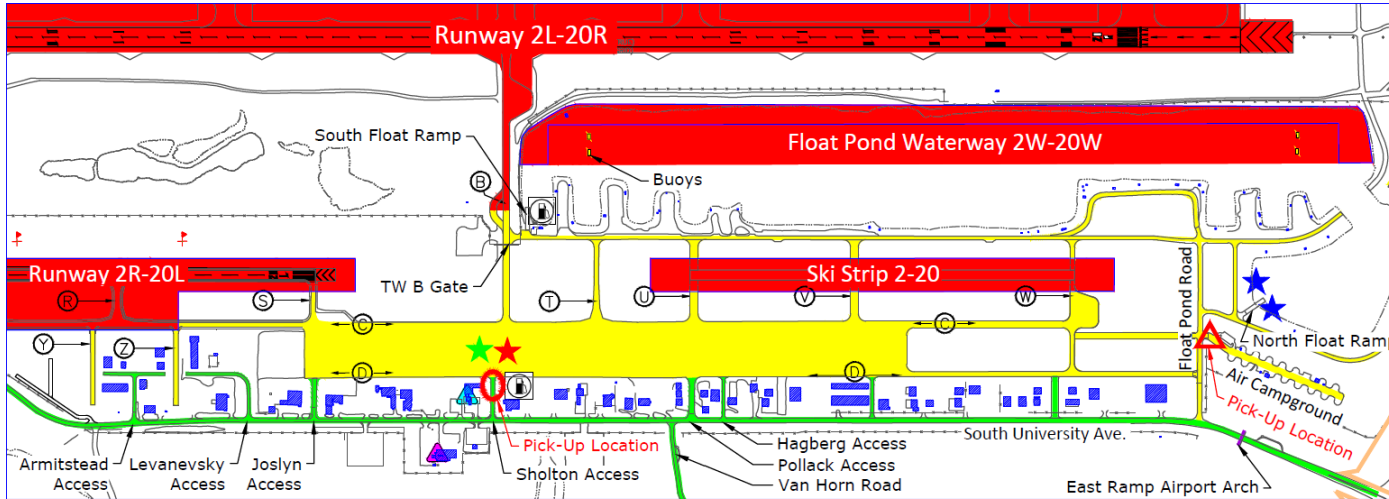
REMOVE AND DISPOSE OF ALL WASTE IN TRASH RECEPTACLES

REPORT ANY LOOSE ANIMALS TO THE AIRPORT
AT (907) 474-2530

Know Before You Go

KNOW BEFORE YOU GO!

For Additional Information: Contact FAI Operations 907-474-2552



Legend

- **Tower Clearance Required** - Any access to the surfaces depicted in RED requires clearance from the tower, (Aircraft Use Only). These surfaces are marked with red hold signs and yellow hold lines painted across access points. Do not cross without tower clearance. Entering these areas without clearance will result in severe penalties and could cause an aircraft accident.
- **Aircraft Operations Area.** Use extreme caution in areas depicted in Yellow. Aircraft always have the right of way and may be behind you. Always take the most direct route to your destination. Maximum Speed Limit is 20 mph. Taxiway Delta is NOT to be used as a vehicle roadway. Except for short distances, use University Avenue.
- **Public Access Roads** are depicted in Green.

- Aircraft Fuel (Self Service)
- FAA Control Tower
- FAA Flight Service Station
- Taxiway
- Transient Aircraft Parking**
- Non-Electric (Row 10)
- Electric (Rows 11-13)
- Float Pond (Water Spaces: T1-T4
Land Spaces: 160-163)

KEEP AN EYE ON FAI

Report Suspicious or Unauthorized Activity

(907) 474-2530 or 911



Authorized Pick-up Locations

- Air Campground accessed via S. University Ave and Float Pond Road
- Pilot Lounge accessed via S. University Ave and Sholton Access

Large gatherings on the East ramp requires prior coordination with Ops department.

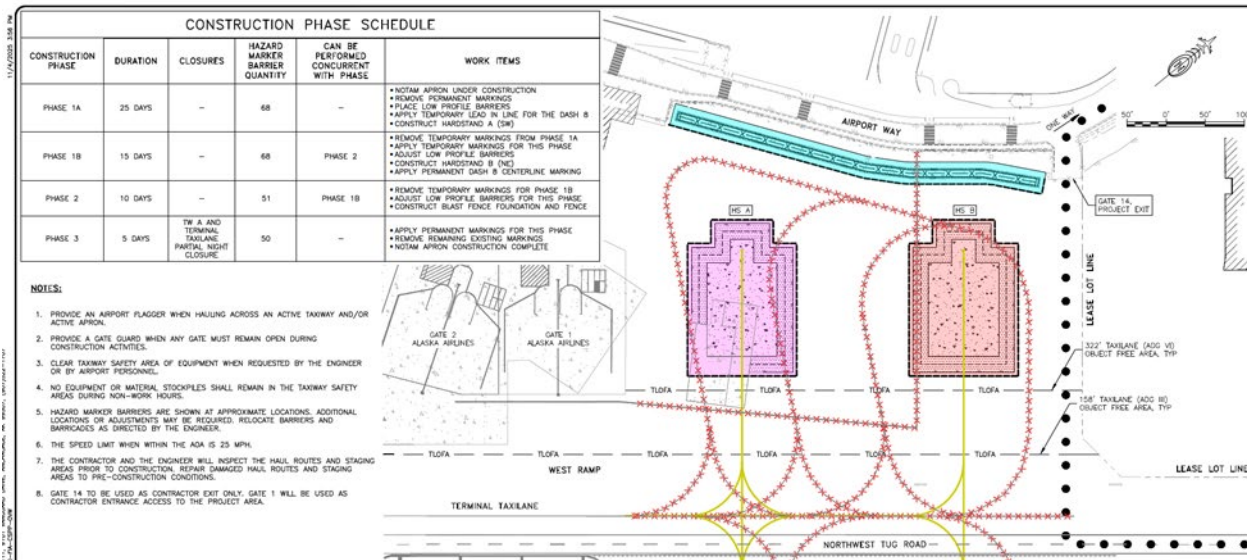
FAI Construction

Short-Term

CONSTRUCTION PROJECTS / NAVAIDS	CONSTRUCTION PERIOD	EFFECTS/LIMFACs/ TEMPORARY OPS
Airfield Gate Upgrade Project	Begin Summer 2026	Small impact to operations during the change out.
Terminal Apron Hardening Project	Begin June 2026	Small impact to North terminal ramp
Private Hangars	On Going	None

Upcoming Projects and Changes

North Terminal Apron Hardening Project



- Adding hardstands on the N end of the terminal
- Enough space to fit two ADG VI aircraft.
- Also adding blast fence on the W side of the Apron.
- Construction likely starting June 2026.