

FAA Weather Camera: Visibility Estimates (VEIA)

Fairbanks General Aviation
Association
April 22, 2025

Tom George
AOPA Alaska Regional Manager
Aircraft Owners & Pilots Association



FAA Weather Cameras

Data valid at 23:05:02z

Bozeman Yellowstone Intl (KBZN) UTC:23:05 Local:16:05 Operated by: MDT

METAR KBZN 282256Z 25015G23KT 10SM CLR 01/M12 A2948 RMK AO2 PK WND 25026/2242 SLP014 T00111122

Bozeman Airport (4) 23:01 02/23/23 (014) 16:01 02/23/23 (457)

CLEARDAY VISUAL REFERENCE

8375' MSL
17.5 SM

Site Elevation: 4445' MSL

FAA advisory weather product

Show Camera Loop

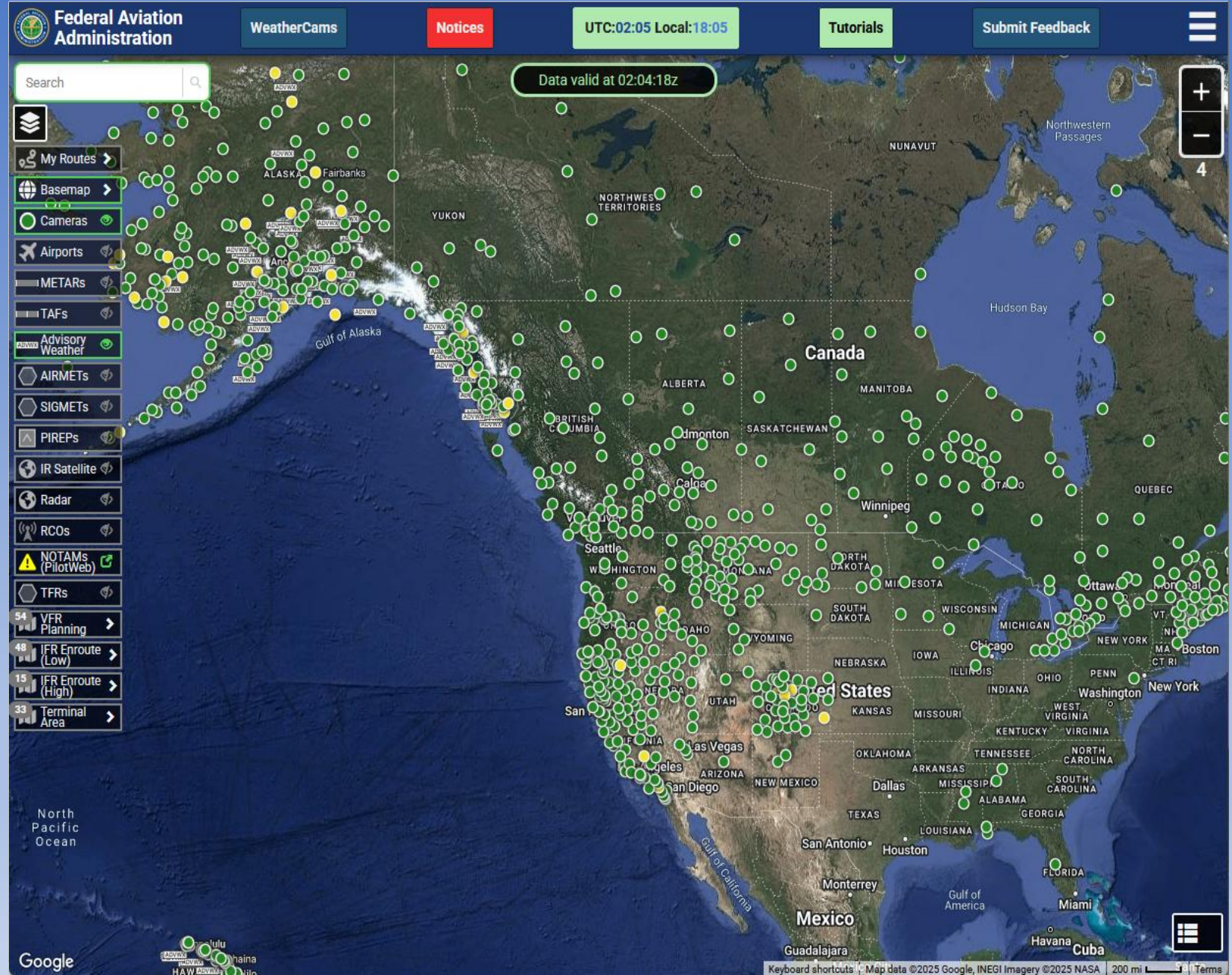
North (5°)	SouthEast (135°)	SouthWest (210°)	West (270°)
------------	------------------	------------------	-------------

Weather Data Weather Trends PIREPs Sectional RCO Airport Info NOTAMS (PilotWeb)

https://weathercams.faa.gov/

Growing network of stations

- Started in Alaska
- Expanding across the country
- Includes FAA and third party hosted sites



Layout

- Camera array on map background
- View of current (last 10 minute) images.

Mc Kinley Natl Park (PAIN) UTC:00:14 Local:16:14

METAR PAIN 262356Z AUTO 36008G15KT 10SM SCT042 04/M02 A2960 RMK AO2 SLP050 T00391022 10044 21044 55001

McKinley Park (N) 00:21:02Z (UTC) 16:14:02Z (LOCAL)

CLEAR DAY VISUAL REFERENCE

2500' MSL 4.0 SM
4000' MSL 4.0 SM
Site Elevation: 1740' MSL

FAA advisory weather product

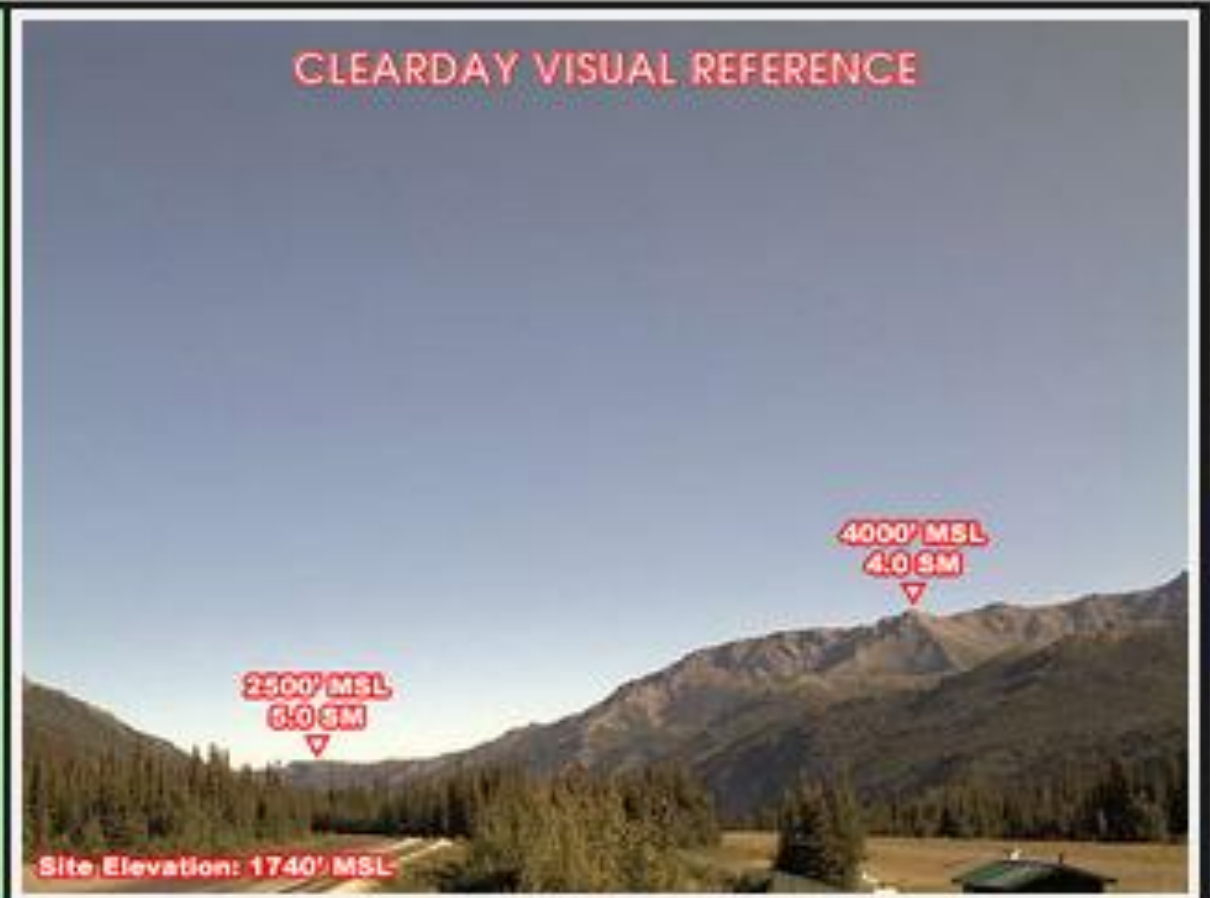
Show Camera Loop

North (9°) SouthEast (117°) South (159°) West (258°)

Weather Data Weather Trends PIREPs Sectional RCO Airport Info NOTAMs (PilotWeb)

Compare current with annotated clear-day image

METAR PAIN 262356Z AUTO 36008G15KT 10SM SCT042 04/M02 A2960 RMK AO2 SLP050
T00391022 10044 21044 55001



Wx Trends

- Video loop
- Six-hour lookback

The screenshot displays the FAA WeatherCams website interface. At the top, the browser address bar shows the URL: <https://weathercams.faa.gov/map/-150.69721,62.69033,-143.55061,64.73763/routes/321fa124-2b24-4525-936d-2c7c>. The website header features the Federal Aviation Administration logo and navigation buttons for WeatherCams, Notices, UTC:00:12 Local:16:12, Tutorials, and Submit Feedback. The main content area is titled "Mc Kinley Natl Park (PAIN) - N" and displays a video feed. A text overlay on the video reads "Image is about 2 hours old". Below the video, there is a "Toggle Clearday" button and a timeline with markers at 18:47z, 22:23z, and 00:02z. The video controls include "Set Start", play/pause, and "Set End" buttons. The left sidebar contains a search bar and a list of navigation options: My Routes, Basemap, Cameras, Airports, METARs, TAFs, Advisory Weather, AIRMETs, SIGMETs, PIREPs, IR Satellite, Radar, RCOs, NOTAMs (PilotWeb), TFRs, VFR Planning, IFR Enroute (Low), IFR Enroute (High), and Terminal Area. The bottom right corner shows a "NOTAMs (PilotWeb)" section.

Other tools

- Website includes tools such as:

- Route planning tool
- METARs and TAFs
- Airports
- RCO locations
- Wx radar, etc.

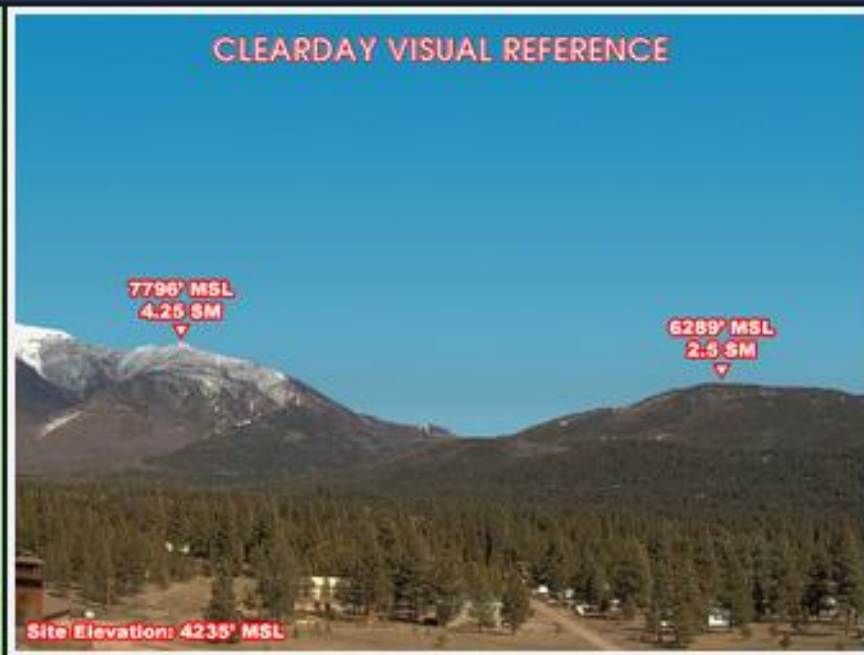
The screenshot displays the Federal Aviation Administration's flight planning tool. At the top, there are navigation links for "WeatherCams" and "Notices", and a status bar showing "UTC:19:44 Local:11:44". A search bar is located at the top left. The main interface features a satellite map with a blue flight route plotted. The route starts at the "FAI TKA" airport, proceeds to "PANN", then "PAIN", "PATW", and finally "PATK". A sidebar on the left contains a list of tool categories, including "My Routes", "Basemap", "Cameras", "Airports", "METARs", "TAFs", "Advisory Weather", "AIRMETs", "SIGMETs", "PIREPs", "IR Satellite", "Radar", "RCOs", "NOTAMs (PilotWeb)", "TFRs", "VFR Planning", "IFR Enroute (Low)", "IFR Enroute (High)", and "Terminal Area". A "Draw A New Route" dialog box is open over the map, with a text prompt: "Draw your own routes on the map and save them for future use."

Seeley Lake Airport
(23S)

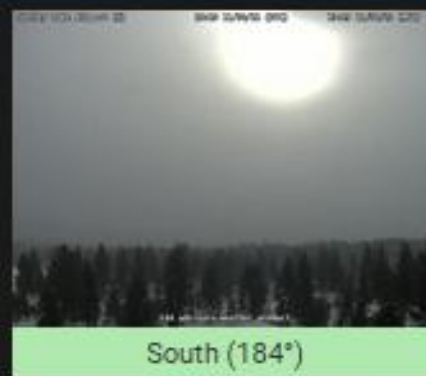
UTC:20:34:25 Local:13:34:25



Operated by: MDT



Show Camera Loop



Weather Data

Weather Trends

PIREPs

Sectional

RCO

Site Info

NOTAMs
(PilotWeb)

Stand-alone camera

This case shows sky condition and visibility based on reference features alone

Supplements METARs

Bozeman Yellowstone
Intl (KBZN)

UTC:20:39:24 Local:13:39:24



Operated by: MDT ⓘ

METAR KBZN 301956Z 00000KT 10SM CLR M11/M14 A2971 RMK AO2 SLP148 T11111144




Supplements METARs

Walden/Jackson
County (33V)

UTC:20:16:10 Local:13:16:10



Operated by: CDOT Aero 

 METAR K33V 291955Z AUTO 26021G25KT 1 1/2SM SCT110 M10/M16 A2973
RMK AO1

New: Visibility Estimation through Image Analytics (VEIA)



Mc Kinley Ntl Park (PAIN) UTC:00:56 Local:16:56

METAR PAIN 200026Z AUTO 35007KT 3SM -SN BR OVC018 01/M01 A3009 RMK AO2 P0000 FZFRANO

Show Camera Loop

North (9°)

SouthEast (117°)

South (159°)

West (258°)

Weather Data
Weather Trends
PIREPs
RCO
Airport Info
NOTAMs (PilotWeb)

Mc Kinley Ntl Park (PAIN) UTC:00:50 Local:16:50

METAR PAIN 200026Z AUTO 35007KT 3SM -SN BR OVC018 01/M01 A3009 RMK AO2 P0000 FZFRANO

Trend

Most Recent Observation

Temperature
1°C (33.8°F)

Dew Point
-1°C (30.2°F)

Pressure
30.09 inches Hg

Wind Speed
7 knots

Wind Direction
350 degrees

Visibility
3 statute miles

Ceiling
1800 ft AGL

VEIA Estimated Visibility (ADVISORY)

VEIA Estimated Visibility is only available from sunrise to sunset (not during twilight hours or at night). They will not report at sites with camera outages, obstructed views, or fewer than three cameras. VEIA is a non-certified FAA Automated WX Sources.

Trend

Most Recent Observation

Visibility
4 statute miles

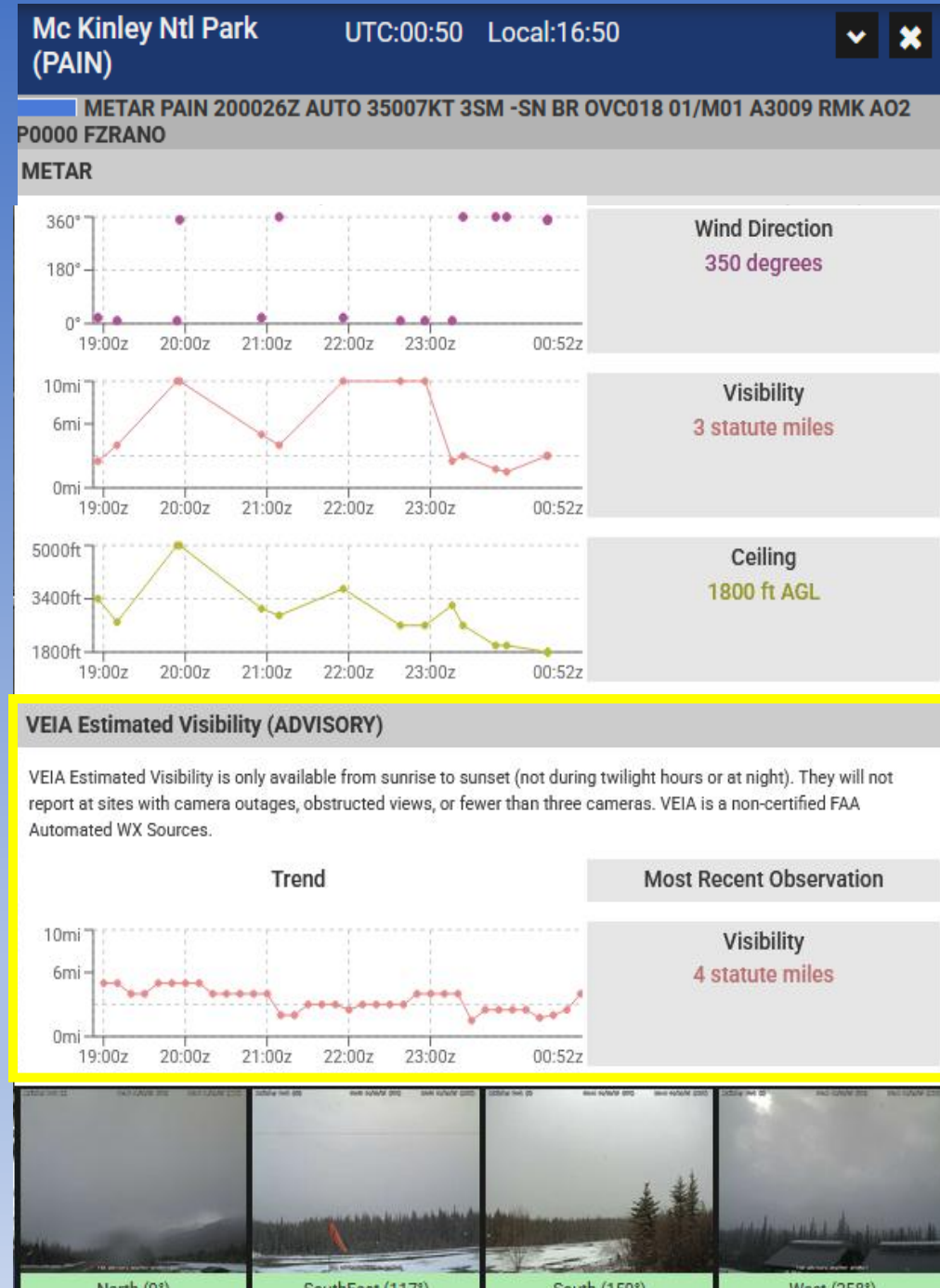
North (9°)

SouthEast (117°)

South (159°)

West (258°)

- **Compares current image with clear sky image**
- **Uses image processing to estimate visibility**
- **Station must have three or more cameras**
- **Limited to daylight hours only**





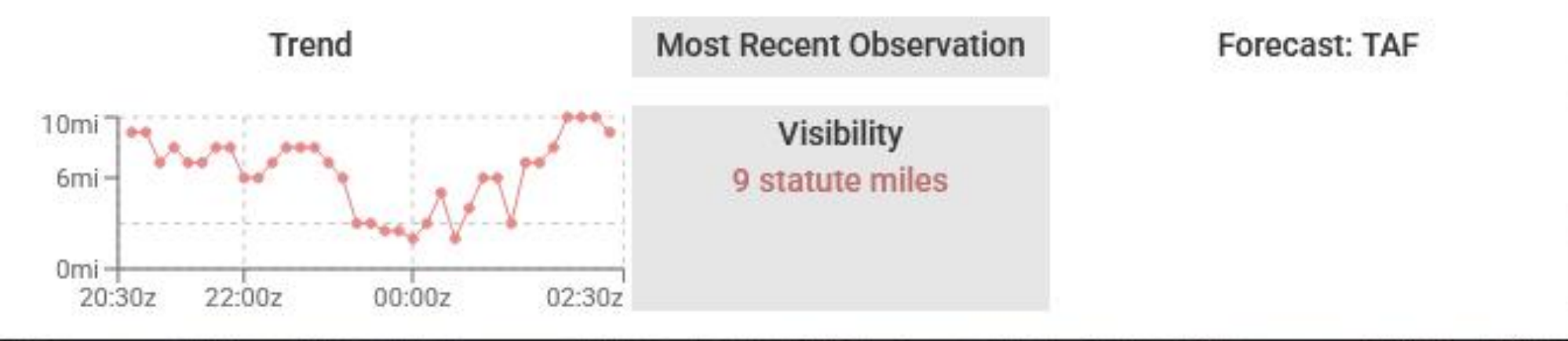
Valdez Pioneer Fld (PAVD) UTC:02:29 Local:18:29

METAR PAVD 180209Z 0000KT 7SM SCT009 BKN022 OVC034 04/03 A2971 RMK AO2 \$

CLEARDAY VISUAL REFERENCE

VEIA Estimated Visibility (ADVISORY)

VEIA Estimated Visibility is only available from sunrise to sunset (not during twilight hours or at night). They will not report at sites with camera outages, obstructed views, or fewer than three cameras. VEIA is a non-certified FAA Automated WX Sources.



Weather Data Weather Trends PIREPs RCO Airport Info NOTAMs (PilotWeb)



Knob Ridge (CSJ) UTC:02:34 Local:18:34

CLEARDAY VISUAL REFERENCE



Knob Ridge (CSJ) UTC:02:33 Local:18:33

Advisory Weather

Trend Most Recent Observation

Advisory Weather data not available at this time

VEIA Estimated Visibility (ADVISORY)

VEIA Estimated Visibility is only available from sunrise to sunset (not during twilight hours or at night). They will not report at sites with camera outages, obstructed views, or fewer than three cameras. VEIA is a non-certified FAA Automated WX Sources.

Trend Most Recent Observation

Visibility
6 statute miles

North (340°)

NorthEast (35°)

SouthEast (120°)

NorthWest (295°)

Weather Data
Weather Trends
PIREPs
RCO
Site Info
NOTAMs (PilotWeb)

Break-up and River Watch

- Greater risk of a “dynamic breakup” this year in the Chena and Upper Tanana River basin
- Consider making RiverWatch flights this spring



google:
Alaska River Watch

Targeted Areas of Interest

Alaska PIREP Areas of Interest: 2025-04-20

APRFC Breakup Map - 20 April 2025 6:57:21 AM AKDT





Tom George – AOPA Alaska Regional Manager
301-695-2092 | tom.george@aopa.org

Thank you!

