

# Fairbanks International Airport Update

GAA April 2025

*To Keep Alaska Flying and Thriving*

# FAI Update Overview

- Leasing/Tiedowns
- Maintenance/Hard Pack Reminders
- Operations/Gate Bravo & Know Before
- Engineering/Construction Updates



# Tiedowns

## Current TIEDOWN Stats

TIEDOWN	TOTAL SPACES			
	Excluding *No Space Available to Rent*	TRANSIENT	RENTABLE	VACANCIES
BE (Paved Push Back w/ Power)	87	9	78	15
BN (Paved Push Back)	54	9	45	18
FP (Float Pond)	175	4	171	27
TE (Paved Taxi Thru w/ Power)	94	8	86	1
TN (Paved Taxi Thru)	9	0	9	0
UN (Unpaved Push Back)	19	0	19	2
<b>TOTALS:</b>	<b>438</b>	<b>30</b>	<b>408</b>	<b>64</b>



- Taxi-Thru with electric has 12-person waitlist
- Tiedown Renewal Agreements Issued to all tenants
- New Permit Informational Flyer available on website
- Tiedown Regulations & Rate Changes currently under review

# Tiedowns Best Practices

## Electric Pedestals

- All electric pedestals now marked with DOT reflective tape on all sides & 5' markers
- Keep electric pedestals covers closed
- Attach nothing to pedestals except cord

## Regular Inspections

- Regularly inspect all tiedowns for damage
- Properly secure your aircraft after landing
- Cover exposed orifices to protect against foreign debris, & bird nests
- Always secure your aircraft like a storm is coming
- Verify everything that should be added or removed to keep everything and everyone safe, like chocks, tiedowns, pitot covers and gust locks
- Always do a second walk-around after your main preflight or post-flight activities to look for things that might not be on your checklist



# Tiedowns Informational Flyer



## YOUR NEW TIEDOWN PERMIT

**FAI LEASING OFFICE**

Airport Administration Office  
6450 Airport Way Ste 1  
Fairbanks, AK 99709

Phone: 907.474.2520  
E-mail: [dot.fai.leasing@alaska.gov](mailto:dot.fai.leasing@alaska.gov)  
Website: [https://dot.alaska.gov/faiiap/aircraft\\_parking.shtml](https://dot.alaska.gov/faiiap/aircraft_parking.shtml)

Hours: 8:00 a.m. to 5:00 pm, Monday through Friday, excluding holidays.



## What's Inside

- Important Contact Information
- Current Stats
- Tiedown Fee List
- Helpful Tiedown Tips
- Pilots Lounge Details
- Tiedown Building Permit link
- Spill Reporting link
- Admin Office Location Map

## **Weblink:**

<https://dot.alaska.gov/faiiap/pdfs/Tiedown-Permit-Info-Flyer.pdf>

# East Ramp Hardpack

- Charlie – south end to Yankee, asphalt year around.
  - Pack removal – Temperature dependent, goal is to maximize access for both wheeled users and Ski users for as long as conditions allow.
  - Pack removal – typically begins on the south end of the east ramp to benefit high volume of wheeled users. Progress north on Charlie, Delta and taxi lanes between rows from south to North. All weather and temperature permitting.
  - Access is primary driver in decisions of removing pack, but also must consider removing pack prior to the melt getting away from us and we have significant icing on the east ramp which is very difficult to remove.
- \*\*Avoid using Delta as a full-length travel lane in soft spring conditions. Leads to excessive rutting which impacts aircrafts ability to navigate that area. Use University South to get as close to the area needing accessed as possible.



# Airfield Deicing Products

-NEWDEAL® Solid Airfield Deicer meets the international aviation standard that is called Aerospace Materials Specification (AMS 1431) adopted by the FAA, which means NEWDEAL is FAA approved and is safe for use around aircraft.

-It is completely different from road salt. NEWDEAL is organic salt that does not contain any chloride that is corrosive to metals, and the product was tested and found to be less corrosive than tap water.

**FAA Approved Sand**



**New Deal**



**Ecoway SF**



**Mix**



# Airfield Deicing Products and Aircraft Cleaning

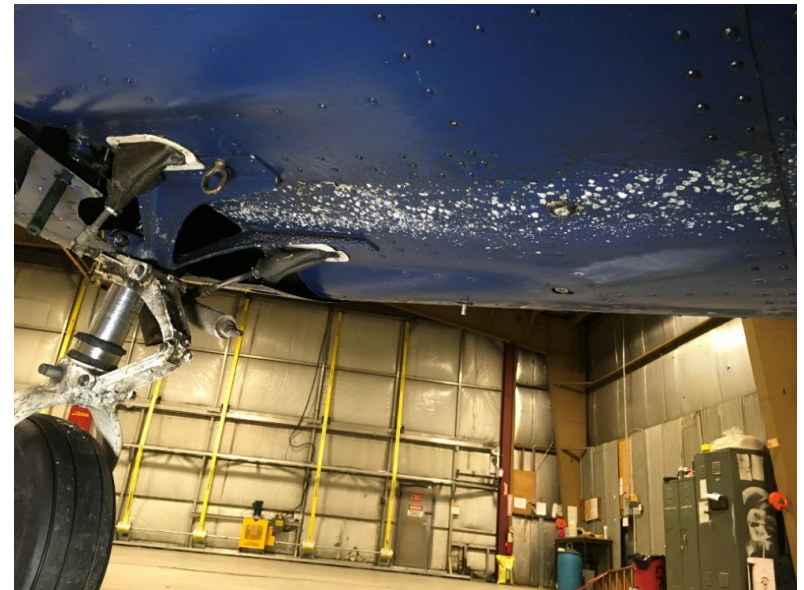
-Residual chemicals on aircraft is not harmful. Similar to typical environmental dust that may accumulate on aircraft, vehicles, equipment during the winter and is not washed off.

-If you cannot wash and no sand is present, it can be wiped with a cloth.

-Is not corrosive if left on aircraft during winter.

Advertised on NOTAMs when chemical is Present on airfield surfaces:

RWY 02R FICON 10 PCT COMPACTED SN  
AND 10 PCT WET DEICED LIQUID AND  
DEICED SOLID 60FT WID OBS AT XXXX





# Taxiway Bravo Gate

- Piggybacking on another users key is not acceptable and can lead to damage to the gate or your aircraft
- Rekey mike 5x to reset 60 second hold open delay
- When gate closure cycle is imminent amber lights will flash on gate frame
- **Do not attempt to beat the closure**
- Do not rely on photo eye to activate if closure is imminent
- Updated Ops Orders 5.3 related to Gate Bravo for recent incidents.



# Know Before You Go

**Pilots: When repositioning on the East Ramp give Ground Control a courtesy call on 121.9**

**Daily and Monthly Aircraft Transient Parking Available! Contact the Airport Transient Office for Affordable Monthly Rates. (907) 455-4571**



Created in cooperation with the Fairbanks General Aviation Association

## FAI East Ramp Orientation & Safety Information

Welcome to the Fairbanks East Ramp: The East Ramp is an Aircraft Operations Area. Access is limited to east side tenants, transient pilots, escorted guests and other persons authorized by Airport Management.

For information regarding access to this area call (907) 474-2530



Get a copy of this info on your mobile device!



@FairbanksInternationalAirport



@Fly\_Fairbanks

**FAA Tower Clearance is Required Before Crossing**

**B 4-22**

**CONTROLLED ACCESS AREA**  
DO NOT PASS THIS POINT WITHOUT FAA TOWER CLEARANCE

Fairbanks Airport  
Speed Limit  
**MAXIMUM 20 MPH**

**SPEED LIMIT 20**

**YIELD TO AIRCRAFT**

Keep in mind that an aircraft may be behind you

**REPORT HAZARDOUS WILDLIFE TO AIRPORT OPERATIONS (907)451-2300**

**KEEP DOGS AND AIRCRAFT SAFE!**



**AIRCRAFT AND LOOSE DOGS ARE A DEADLY COMBINATION**

DOGS MUST BE RESTRAINED AT ALL TIMES

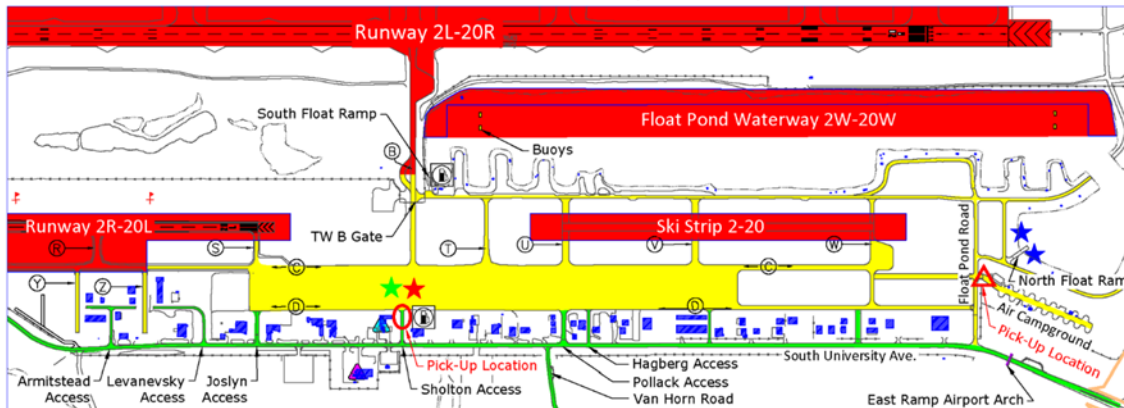
REMOVE AND DISPOSE OF ALL WASTE IN TRASH RECEPTACLES

REPORT ANY LOOSE ANIMALS TO THE AIRPORT AT (907) 474-2530

# Know Before You Go

## KNOW BEFORE YOU GO!

For Additional Information: Contact FAI Operations 907-474-2552



### Legend

- **Tower Clearance Required** – Any access to the surfaces depicted in RED requires clearance from the tower. (Aircraft Use Only). These surfaces are marked with red hold lines and yellow hold lines painted across access points. Do not cross without tower clearance. Entering these areas without clearance will result in severe penalties and could cause an aircraft accident.
- **Aircraft Operations Area**. Use extreme caution in areas depicted in Yellow. Aircraft always have the right of way and may be behind you. Always take the most direct route to your destination. Maximum Speed Limit is 20 mph. Taxiway Delta is NOT to be used as a vehicle roadway. Except for short distances, use University Avenue.
- Public Access Roads are depicted in Green.

- Aircraft Fuel (Self Service)
- FAA Control Tower
- FAA Flight Service Station
- Taxiway
- Transient Aircraft Parking**
  - Non-Electric (Row 10)
  - Electric (Rows 11-13)
  - Float Pond (Water Spaces: T1-T4  
Land Spaces: 160-163)

### KEEP AN EYE ON FAI

Report Suspicious or Unauthorized Activity

(907) 474-2530 or 911



### Authorized Pick-up Locations

- Air Campground accessed via S. University Ave and Float Pond Road
- Pilot Lounge accessed via S. University Ave and Sholton Access

Large gatherings on the East ramp requires prior coordination with Ops department.

# FAI Construction

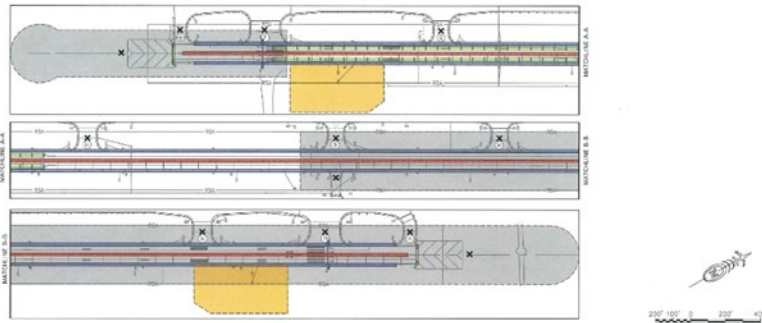
## Short-Term

CONSTRUCTION PROJECTS / NAVAIDS	CONSTRUCTION PERIOD	EFFECTS/LIMFACs/ TEMPORARY OPS
Airfield Lighting Project – 2L/20R	Proposed start date of mid-April 2025. Anticipated 12 week time frame based on what issues arise with wiring.	Runway Closure between 0200 and 0500 daily.
Passenger Boarding Bridge Replacement	Beginning Fall 2025. Anticipated 2 week time frame.	Low impact to Operations.
Terminal Apron Hardening Project	Begin Spring 2026	Small impact to North terminal ramp
Private Hangars	On Going	None

# Upcoming Projects and Changes

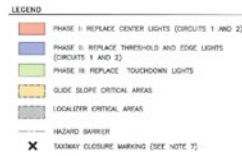
## Runway Lighting Project

- Starting April 2025
- Limited scope:
  - Shut down Runway 20R-2L for three hrs daily.
  - Closure NOTAM with 30 Min PPR posted for the duration of the project.
  - Broke down into 3 Phases
    - Ph 1: centerline lights
    - Ph 2: Threshold & Edge lights
    - Ph 3: TDZ lights
- Project should be completed by early to mid July if there are no complications.



**NOTES**

- COORDINATE DISCONNECTION, OUTAGES, AND REMOVAL OF EXISTING RUNWAY 2L-20R LIGHTING SYSTEM WITH AIRPORT OPERATIONS AND THE ENGINEER.
- AIRPORT SURFACES SHALL BE OPERATIONAL FOR AIRCRAFT AT THE END OF THE CLOSURE.
- TURN TAXIWAY LIGHTS OFF AND MARK CLOSED TAXIWAYS. PROVIDE TAXIWAY CLOSURE MARKERS AND ADDITIONAL HAZARD BARRIER MARKERS AS NEEDED.
- OBSTACLE FREE ZONE (OFZ) IS 400 FT WIDE CENTERED ON RUNWAY 2L-20R. RUNWAY OBSTACLE FREE AREA (ROFA) IS 800 FT WIDE CENTERED ON RUNWAY 2L-20R. PRECISION OBSTACLE FREE ZONE (POFZ) IS 800 FT WIDE CENTERED ON RUNWAY 2L-20R ONLY WHEN THE PRECISION INSTRUMENT APPROACHES ARE IN OPERATION. EQUIPMENT NOT IN USE AND STOCKPILES SHALL BE CLEARED OF THE ROFA PER AC 150/5370-20 SECTION 2.8.1. WORKVANS AND EQUIPMENT SHALL MAINTAIN RSEA DURING AIRCRAFT OPERATIONS. RSEA DIMENSIONS FOR RUNWAY 2L-20R IS 500 FT WIDE CENTERED ON THE RUNWAY.
- CONTRACTOR SHALL HAVE ATCT RADIO APPROVAL WHEN OPERATING ON OR ADJACENT TO A MOVEMENT AREA.
- TAXIWAY CLOSURES SHALL BE PERFORMED AS DIRECTED BY AIRPORT OPERATIONS. CONTRACTOR SHALL COORDINATE WITH THE ENGINEER AND AIRPORT OPERATIONS PRIOR TO START OF EACH PHASE.
- TAXIWAY CLOSURES SHALL BE MARKED BY VERT. NON LIGHTING 'X'. CONTRACTOR MAY BE REQUIRED TO CLOSE TAXIWAYS AT FINAL OPERATION TW F AND TP P SHALL BE CLOSED WITH RUNWAY CLOSURE.
- HAZARD BARRIERS ARE TO BE PLACED AS INDICATED OR AS DIRECTED BY THE ENGINEER OR AIRPORT OPERATIONS.
- PROTECT PERMANENT LIGHT CANS DURING SUBSEQUENT CONSTRUCTION PHASING UNTIL PERMANENT LIGHTING IS INSTALLED.
- DURING CLOSURES OF RUNWAY 2L-20R ALL RUNWAY LIGHT CIRCUITS SHALL BE SHUTOFF AND LIGHTED RUNWAY CLOSURE 'X's SHALL BE PLACED AT EACH END PRIOR TO START OF WORK EACH NIGHT. DAILY RUNWAY CLOSURE HOURS SHALL BE 30 MINUTES POST FINAL OPERATION AND 30 MINUTES PRIOR TO FIRST OPERATION.
- PHASES 1 AND 2 CONSIST OF THE REPLACEMENT OF LIGHTING FOR THE RUNWAY CENTERLINE/EDGE AND THRESHOLD LIGHTS, RESPECTIVELY. DURING THIS PHASE, POWER SHALL BE RESTORED TO THE CIRCUIT DURING ACTIVE RUNWAY HOURS UNLESS APPROVED. TEMPORARY LIGHTING MEASURES ARE IN PLACE.
- PHASE 3 SHALL CONSIST OF THE REPLACEMENT OF LIGHTING FOR THE RUNWAY TOUCH-DOWN ZONE. DURING THIS PHASE, POWER SHALL BE RESTORED TO THE CIRCUIT DURING ACTIVE RUNWAY HOURS UNLESS APPROVED. TEMPORARY LIGHTING MEASURES ARE IN PLACE.
- RUNWAY EDGE LIGHTS WILL BE OPERATIONAL AT THE END OF EACH CLOSURE. A MINIMUM OF SIX OF THE LIGHTS WILL BE IN WORKING ORDER WITH NO CONSECUTIVE LIGHTS BEING OUT.
- RUNWAY CENTER LIGHTS WILL BE OPERATIONAL AT THE END OF EACH CLOSURE. A MINIMUM OF SIX OF THE LIGHTS WILL BE IN WORKING ORDER WITH NO CONSECUTIVE LIGHTS BEING OUT.
- POWER MUST BE RESTORED TO TOUCH-DOWN AND THRESHOLD LIGHT CIRCUITS AT THE END OF EACH CLOSURE. A MINIMUM OF SIX OF THE THRESHOLD AND TOUCH-DOWN LIGHTS SHALL BE OPERATIONAL AT THE END OF EACH CLOSURE WITH NO MORE THAN ONE LIGHT OUT OF SERVICE ON ANY INDIVIDUAL BAR. CONTRACTOR SHALL NOT MIX NEW AND EXISTING LIGHTS ACROSS ANY INDIVIDUAL BAR.



# Upcoming Projects and Changes

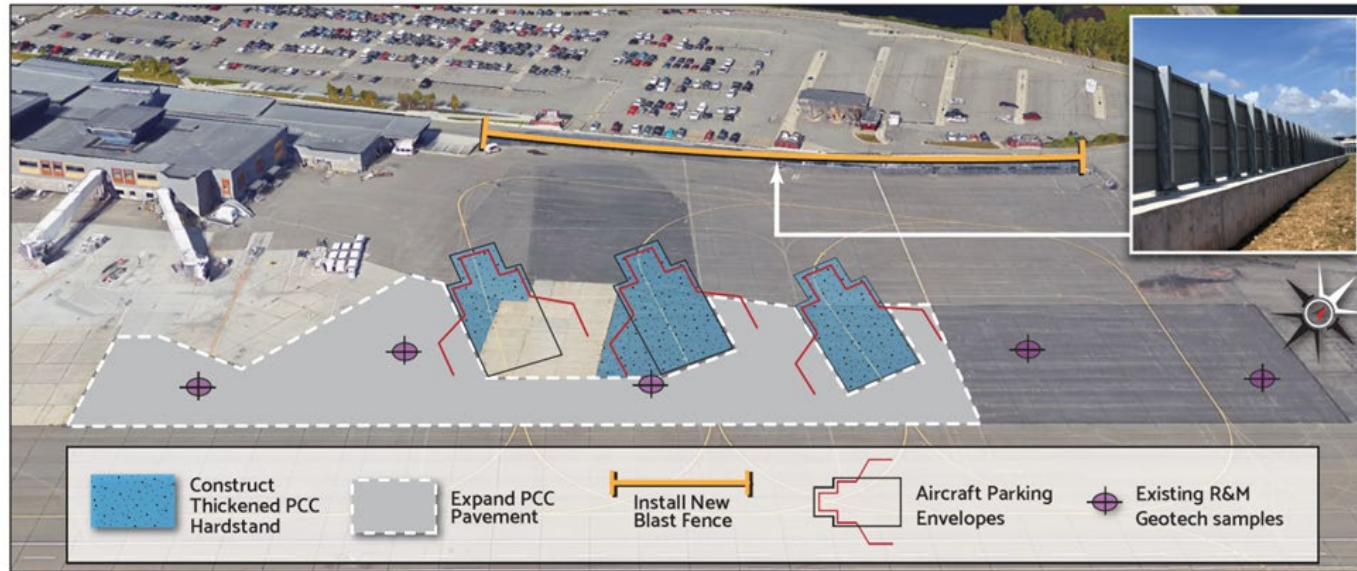
## PBB Replacement

- Jet bridge #3 will be replaced beginning Fall 2025
- Will be coordinating construction with all affected tenants
- Should be small impact to operations



# Upcoming Projects and Changes

## North Terminal Apron Hardening Project



- Adding hardstands on the N end of the terminal
- Enough space to fit three 737-900's or two ADG IV aircraft.
- Also adding blast fence on the W side of the Apron.
- Starting the design now, advertise and award sometime fall 2025
- Construction likely starting spring 2026.