



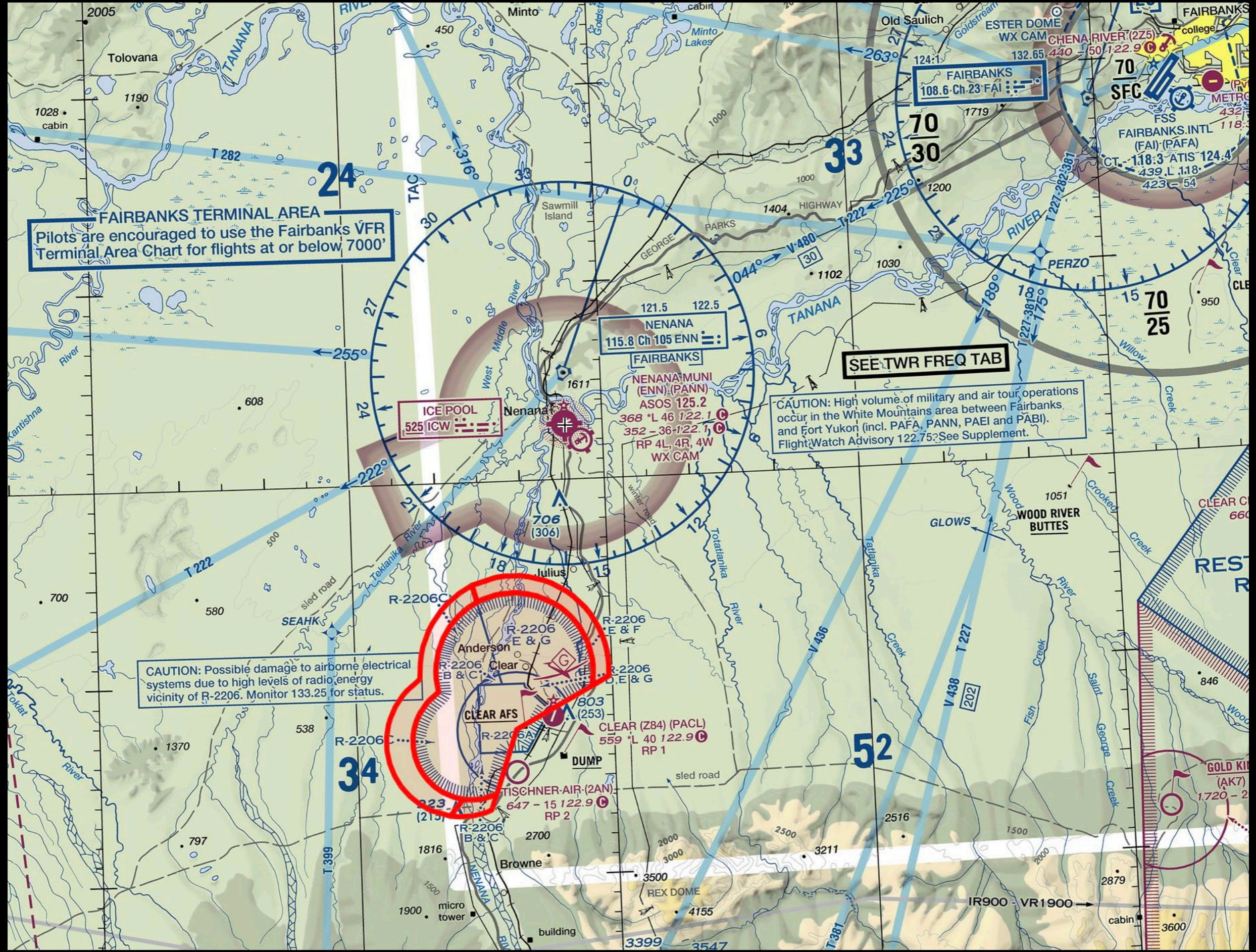
**ALASKA AIRMEN'S
ASSOCIATION**

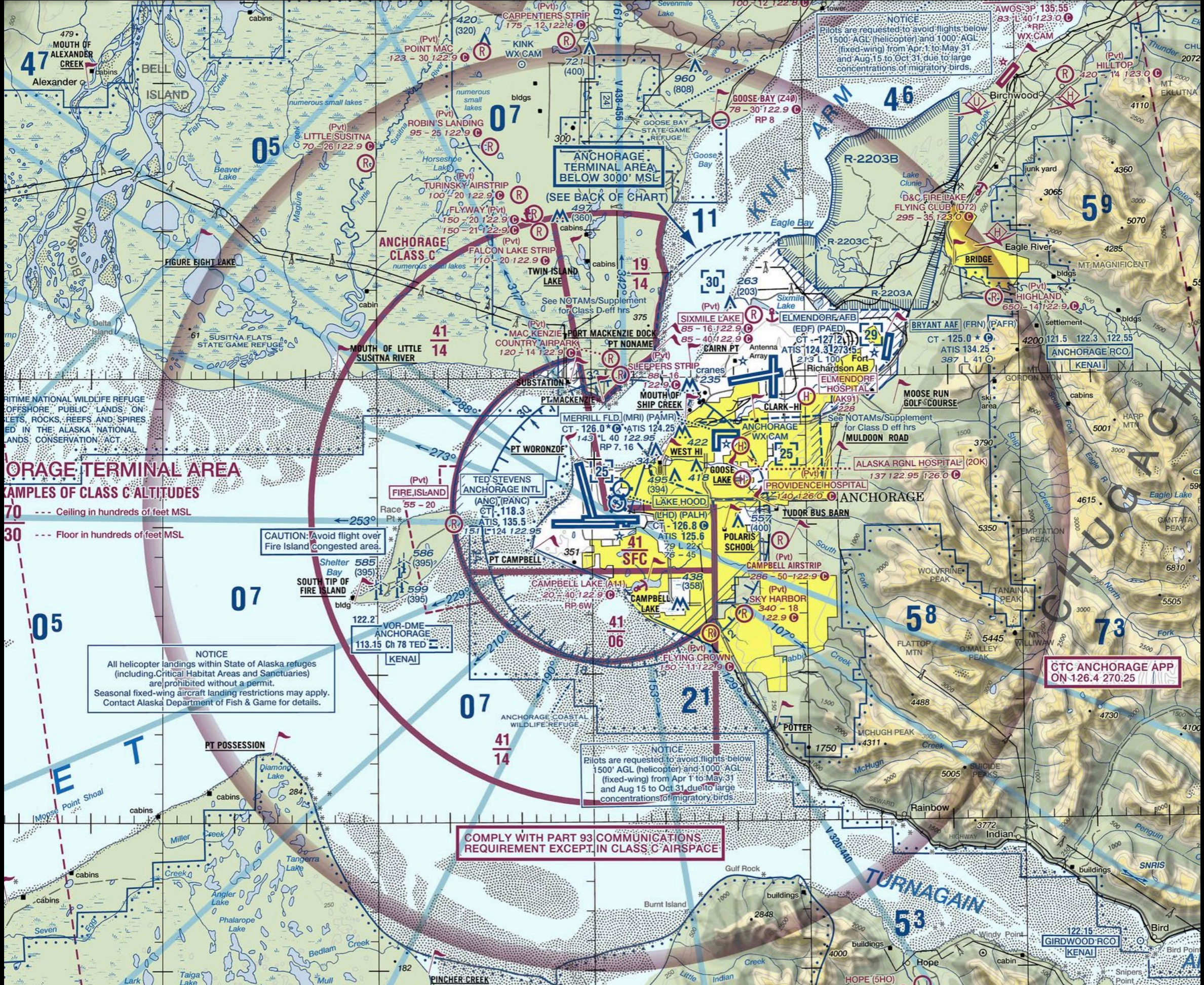
FAIRBANKS TERMINAL AREA
Pilots are encouraged to use the Fairbanks VFR Terminal Area Chart for flights at or below 7000'

SEE TWR FREQ TAB

CAUTION: High volume of military and air tour operations occur in the White Mountains area between Fairbanks and Fort Yukon (incl. PAFA, PANN, PAEI and PABI). Flight Watch Advisory 122.75. See Supplement.

CAUTION: Possible damage to airborne electrical systems due to high levels of radio energy vicinity of R-2206. Monitor 133.25 for status.





ANCHORAGE TERMINAL AREA
SAMPLES OF CLASS C ALTITUDES

- 70 --- Ceiling in hundreds of feet MSL
- 30 --- Floor in hundreds of feet MSL

NOTICE
 All helicopter landings within State of Alaska refuges (including Critical Habitat Areas and Sanctuaries) are prohibited without a permit. Seasonal fixed-wing aircraft landing restrictions may apply. Contact Alaska Department of Fish & Game for details.

NOTICE
 Pilots are requested to avoid flights below 1500' AGL (helicopter) and 1000' AGL (fixed-wing) from Apr 1 to May 31 and Aug 15 to Oct 31 due to large concentrations of migratory birds.

COMPLY WITH PART 93 COMMUNICATIONS REQUIREMENT EXCEPT IN CLASS C AIRSPACE

NOTICE
 Pilots are requested to avoid flights below 1500' AGL (helicopter) and 1000' AGL (fixed-wing) from Apr 1 to May 31 and Aug 15 to Oct 31 due to large concentrations of migratory birds.

CTC ANCHORAGE APP
 ON-126.4 270.25

CAUTION: Avoid flight over Fire Island congested area.



Adam White

adam.white@alaskaairmen.org

907-322-1098