



# Aviation Initiatives Update

Tom George – AOPA Alaska Regional Manager

October 12, 2021



## **Topics:**

### **Charts, weather and TFR's!**

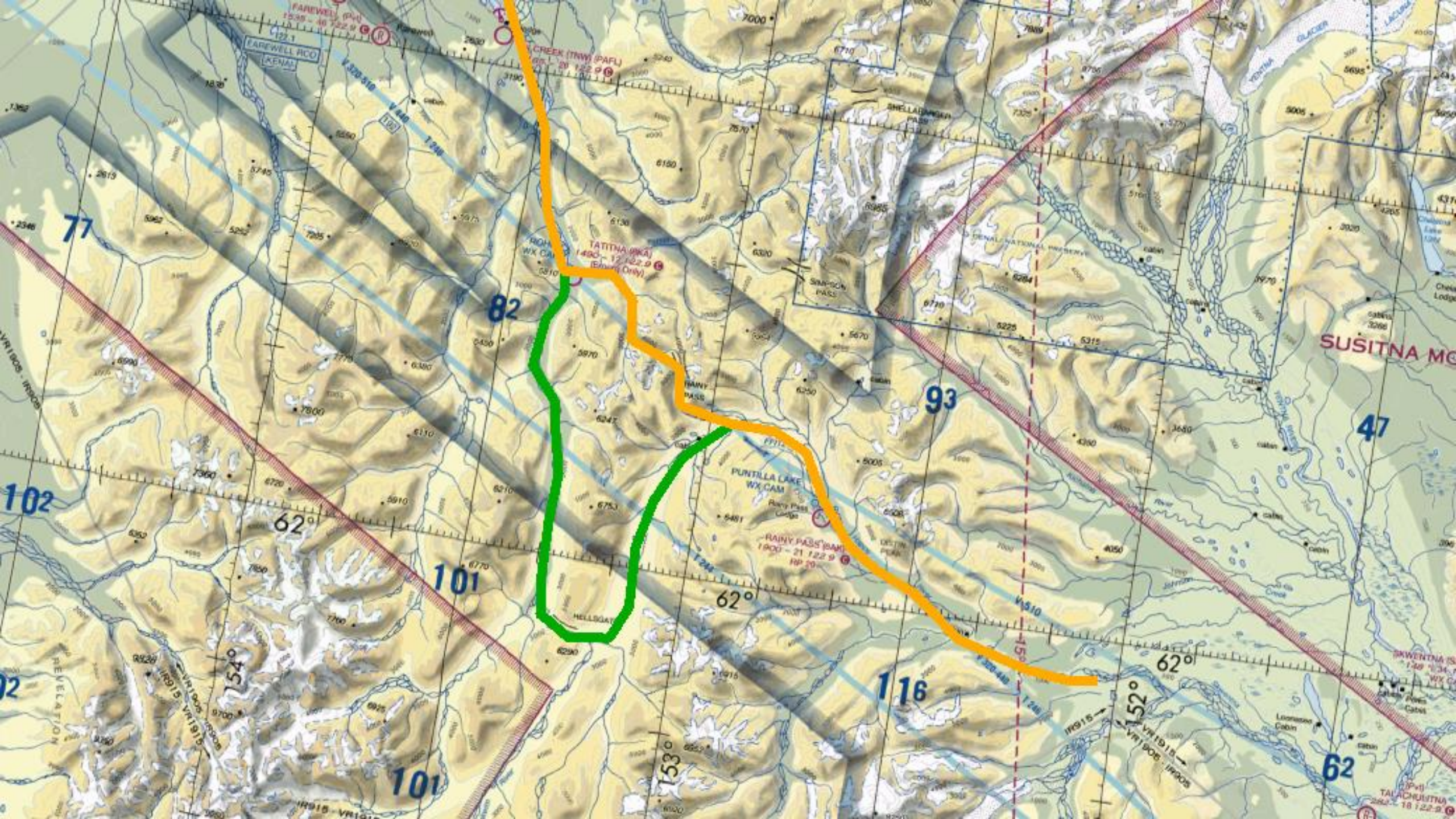
- **Renaming Ptarmigan Pass**
- **Charting changes**
- **Cloud Cross Section point to point**
- **FAA Weather Camera visibility project**
- **Clear Radar TFR (R-2206) update**





291° 19' 11m





TATITNA (BKA)  
1450 - 12 122.9  
(BKA Only)

PURTILLA LAKE  
WX CAM  
Rainy Pass  
Cabin

RAINY PASS (BKA)  
1900 - 21 122.9  
RP 30

FAREWELL (P4)  
1535 - 46 122.9

CREEK (TRW) (P4)  
65 - 20 122.9

SUSITNA MOUNTAINS

SKWENTNA IS.  
1740 - 134.7  
WX CAM

TALACHUSTNA  
2822 - 18 122.9

77

82

93

47

102

62

101

62

116

62

62

154

153

152

102

REVELATION

101

101



# Definition:

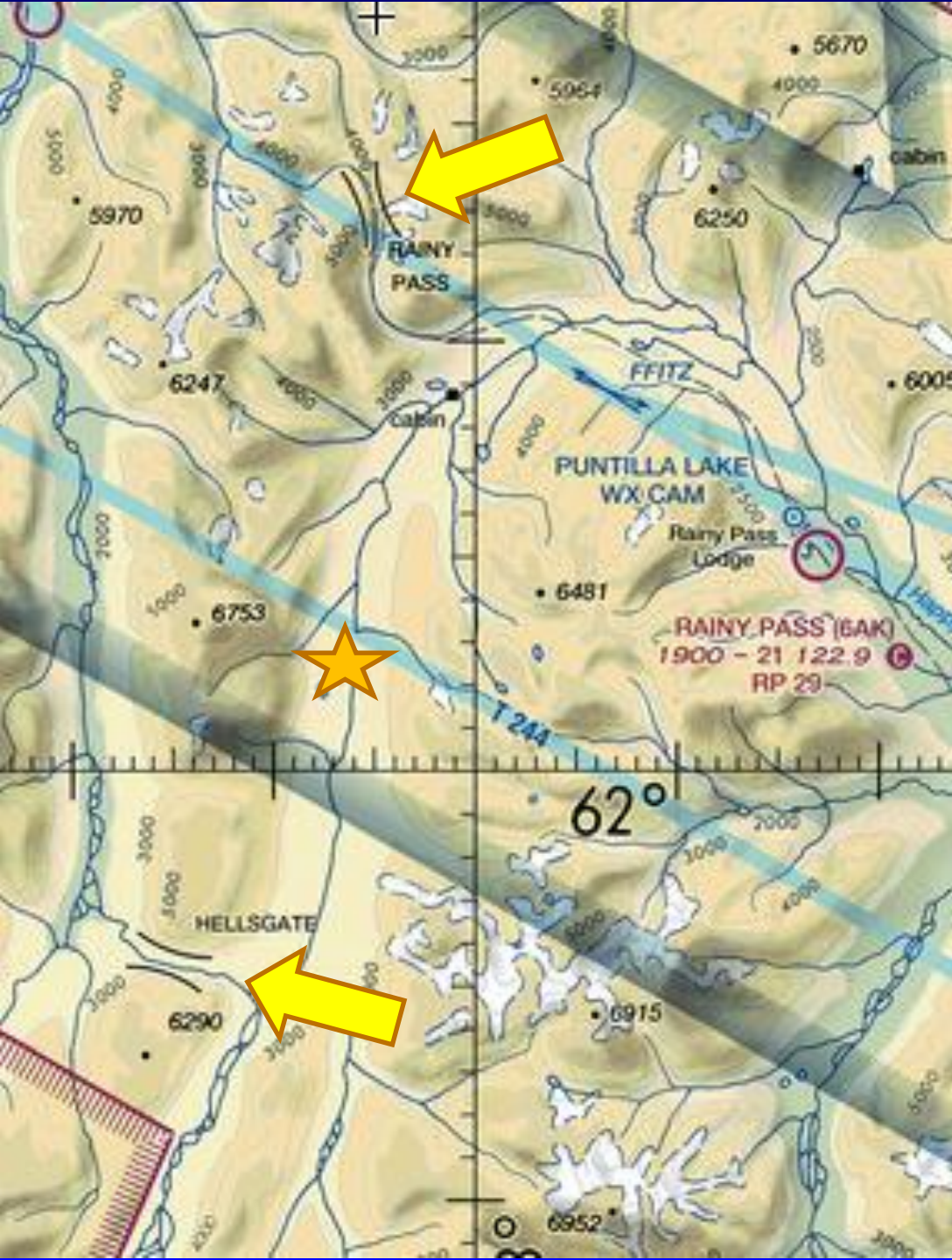
- A mountain pass is the **highest portion** of a path through a mountain range. The highest portion of the route is also **the lowest route** that can be traveled between mountains on each side. \*

FAA Mountain Pass  
Chart Symbol

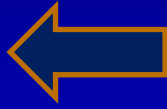


\* Definition from Worldlandforms.com





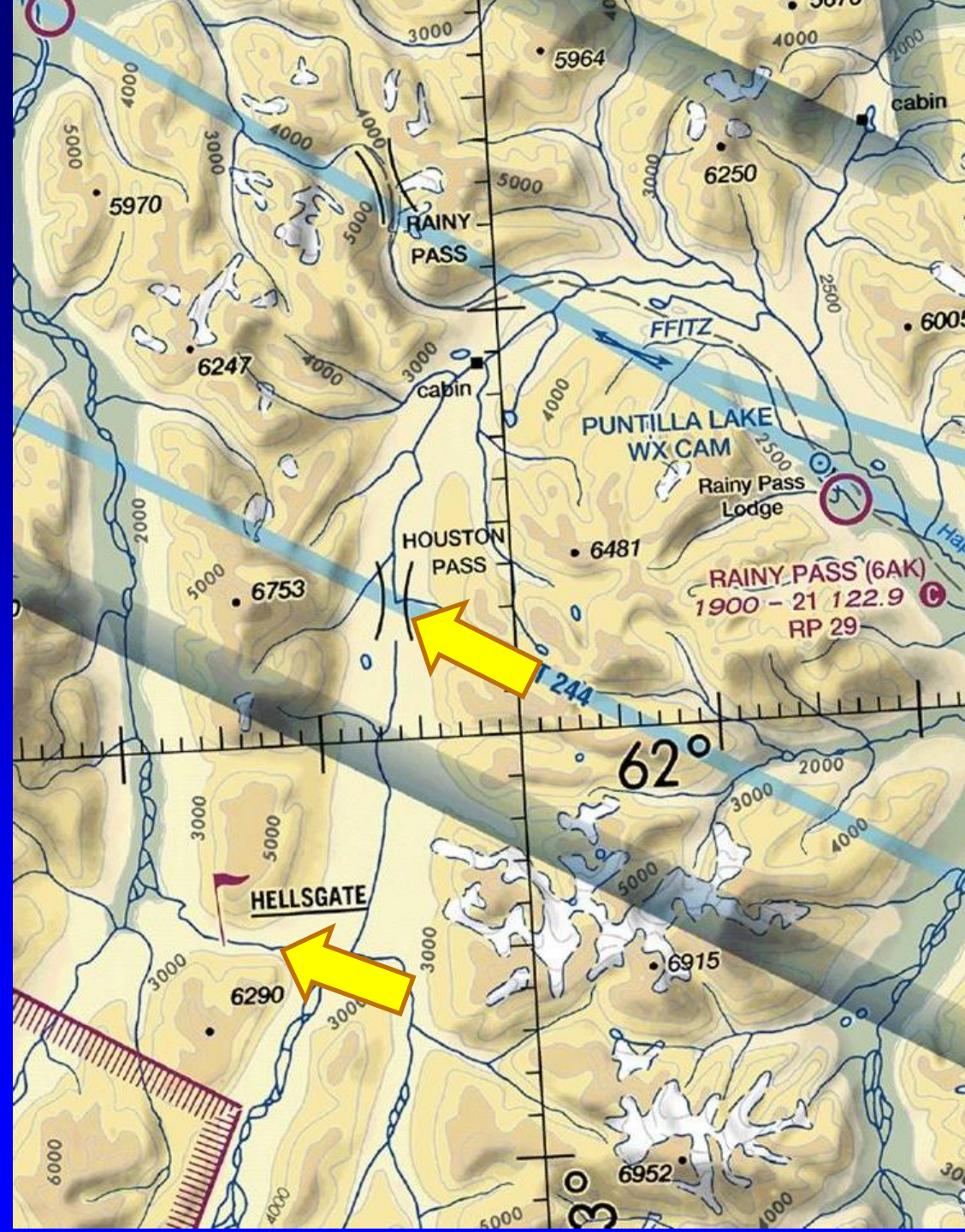
**Before**



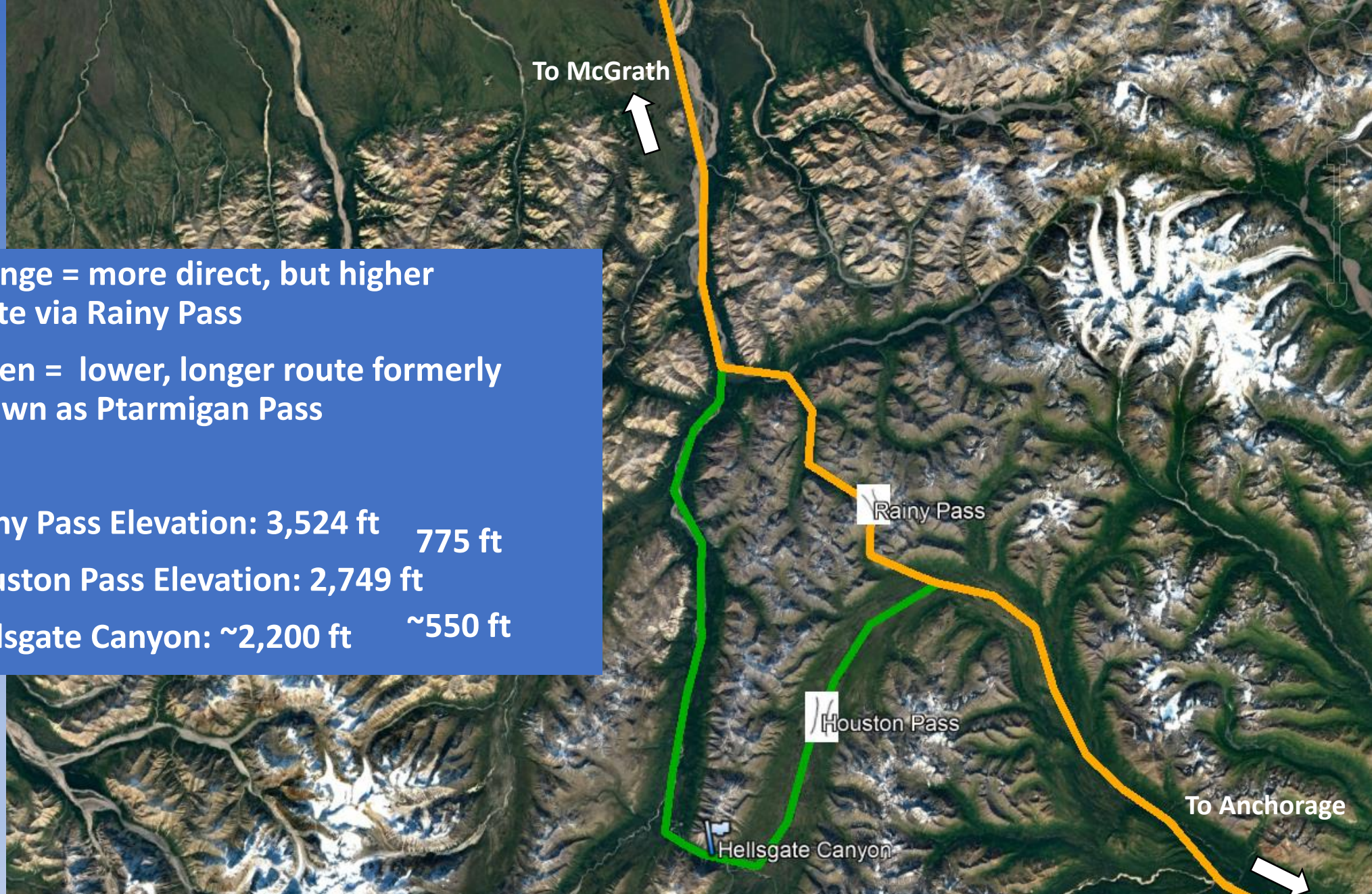
**August 12, 2021**



**After**







To McGrath



Rainy Pass

Houston Pass

Hellsgate Canyon

To Anchorage



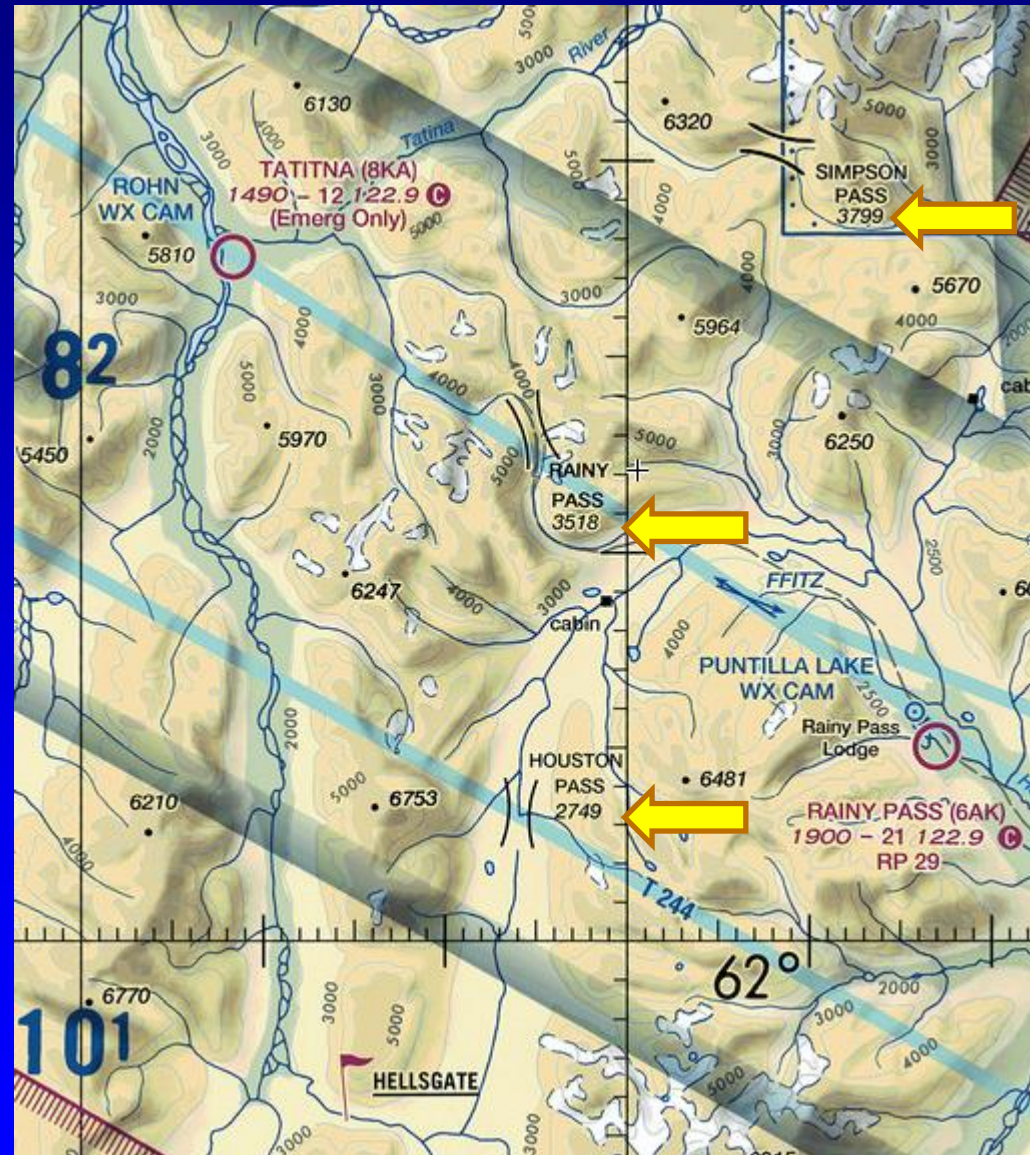
- Orange = more direct, but higher route via Rainy Pass
- Green = lower, longer route formerly known as Ptarmigan Pass
- Rainy Pass Elevation: 3,524 ft      775 ft
- Houston Pass Elevation: 2,749 ft
- Hellsgate Canyon: ~2,200 ft      ~550 ft

<https://blog.aopa.org/aopa/2021/08/06/ptarmigan-pass-renamed/>



# Mountain Pass Elevations

- **FAA just added elevation values to ~50 mountain passes in Alaska on Oct. 7<sup>th</sup>.**
- **Make sure to download/acquire current charts!**

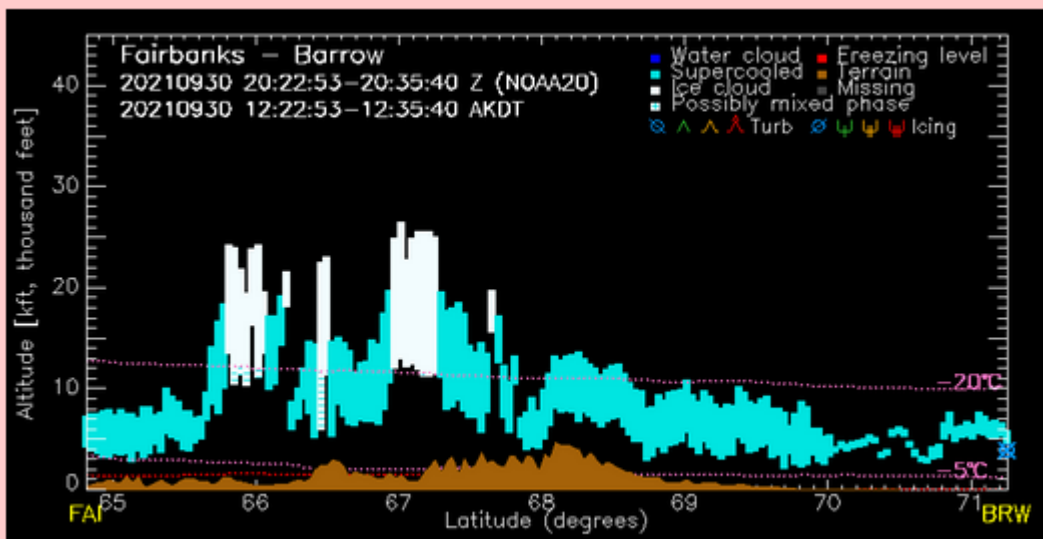




# Experimental Cloud Cross- section

- **Satellite imagery used to generate cloud base, tops and icing information**

Cloud Vertical Cross-section Fairbanks to Barrow (Red)



Latest Loop

Archive



## CIRA Aviation

Home

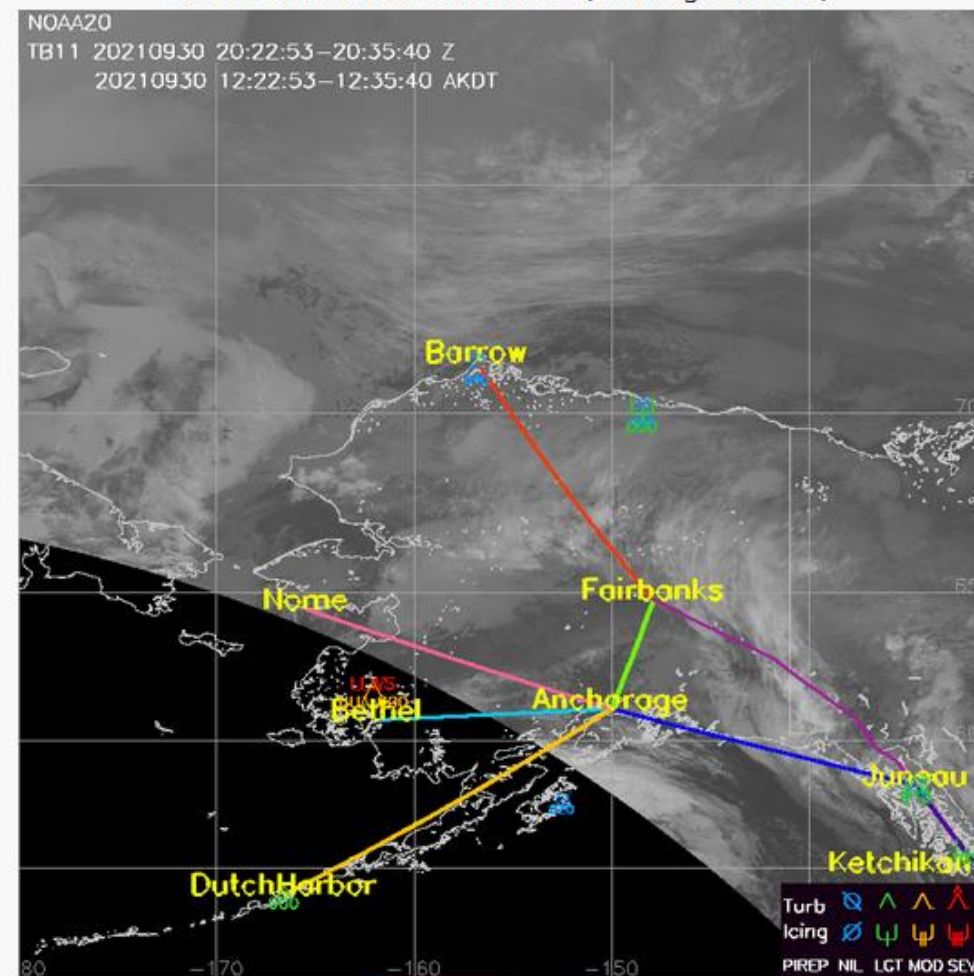
NEW! Custom Flight Path

Back to Old Site

Quick Guide | Introduction/FAQ | Experimental Products Disclaimer | Contact Us

### Latest Data

Alaska Cloud Infrared Overview (with Flight Routes)



Latest Loop

Archive



- **Can now build your own route!**

- **Airports**
- **Lat/Long**
- **Point and Click**

<https://aviation.cira.colostate.edu/>

### Custom Flight Path

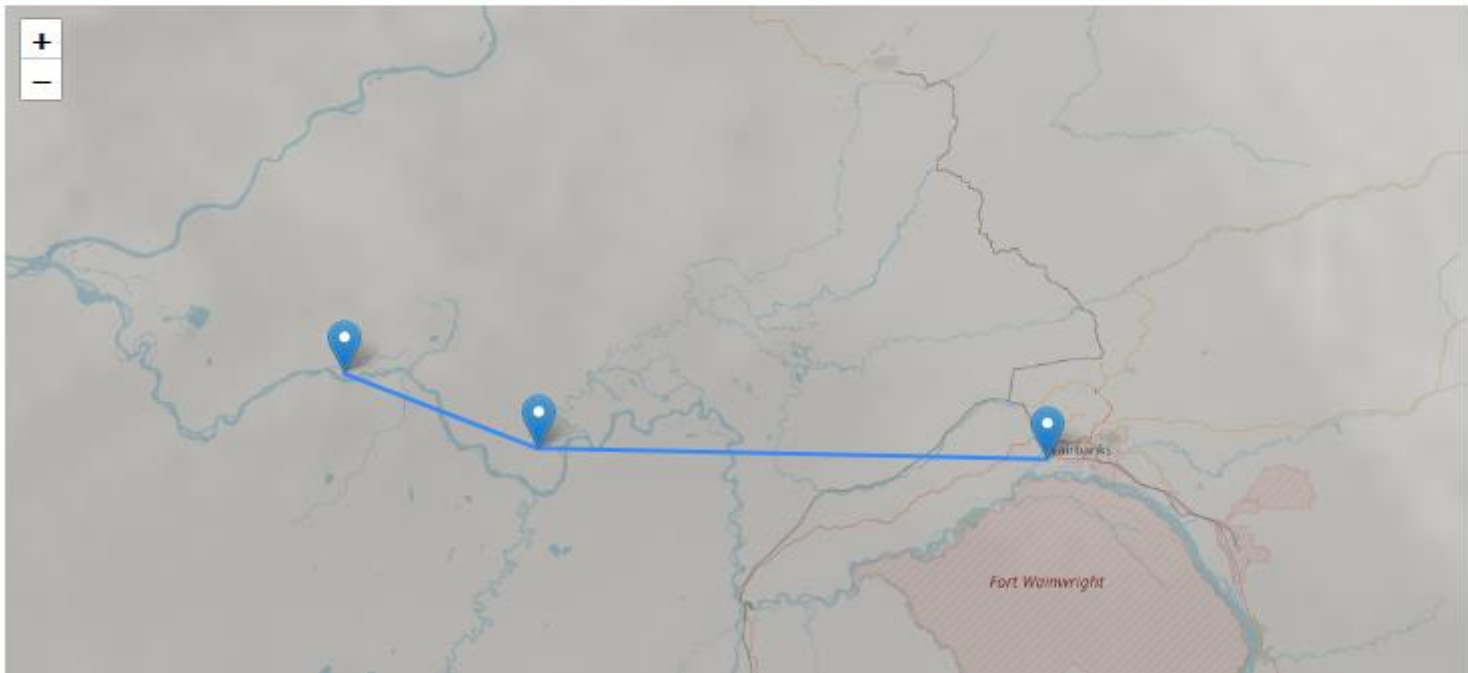
**Please Note:** This is an experimental aviation cross-section product (see disclaimer link above).

Click on each point along your flight path, or select an airport from the drop-down list, then click "Confirm Waypoints" and then "Generate Cross-Section" to generate a cross-section for your flight path. If you need to start over, click "Clear All".

Clear All Manual Entry --- Add an Airport --- Confirm Waypoints (3)

Opacity

ⓘ Did you know? You can click this map to add waypoints!





# FAA weathercam visibility demo



Clear Day Image

Current Image

McGrain (NW)

UTC: 00:20:03:06:18 Local: 13:22:03:03:18

Presentation on Using Crowd Sourcing  
to Provide Enhanced Visibility Information for Aviation

3600' MSL  
23.0 SM

640' MSL  
2.7 SM

Site Elevation: 322' MSL

FAA advisory weather product

**HOSTED BY:** Researchers from the Federal Aviation Administration (FAA) and Collins Aerospace

**Thursday, October 14, 11 am Alaska Daylight Time**

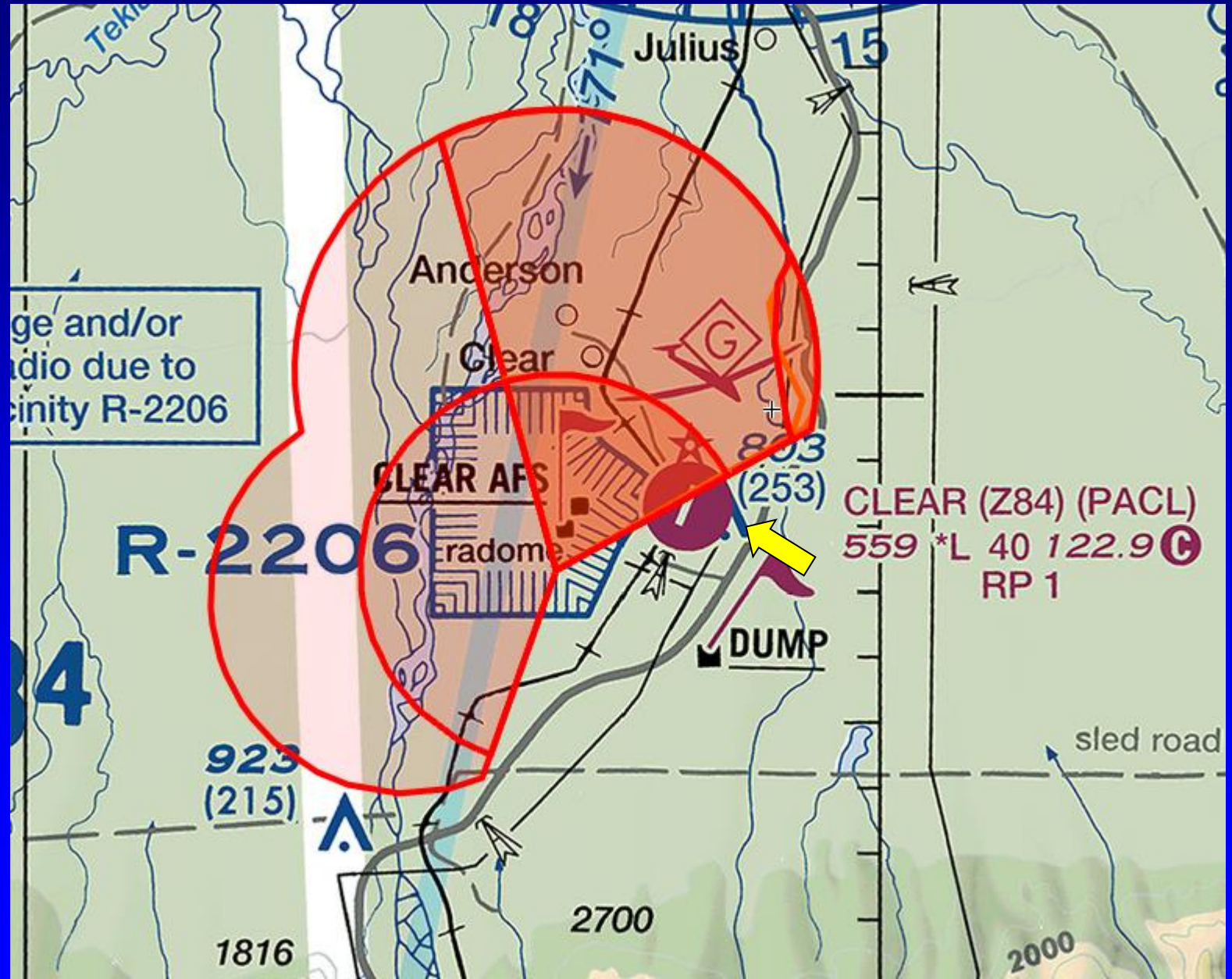
**TOPIC:** Informational session on how pilots, dispatchers, and other users of FAA webcams can be a part of enhancing aviation safety in Alaska and other regions, by participating in a research activity as a Weather Information Evaluator, using crowd sourcing techniques to help improve the quality, quantity, and availability of airport conditions and weather information.

- **Click to Join:**  
**<https://faavideo.zoomgov.com/j/16130653524>**
- **Passcode: 642640**
- **If prompted, accept the Zoom application as instructed.**



# Clear TFR & R-2206

- **Continue use of TFR during testing of the LRDR systems**
- **Permanent Restricted Area expected to chart by December 2022.**
- **Watch for TFR change:**
  - **24 hours for outer/higher sections**
  - **Tue/Thur/Sat for lower corridor/airport segments**







Tom George – AOPA Alaska Regional Manager  
301-695-2092 | [tom.george@aopa.org](mailto:tom.george@aopa.org)

Thank you!

