

Float Pond Working Group

RUNWAY SAFETY ACTION TEAM

- ◆ Action Code Item: FAI-2018-001
- ◆ Melissa Osborn, FAI Operations Director asked GAA to form a working group to look at the issues raised.
- ◆ Make a recommendation.

Float Pond Working Group

◆ Participant:

- ◆ Joshua Coleman, Air Traffic Mgr, FAI Tower
- ◆ RJ Stumpf, Fairbanks Int. Airport Engineer
- ◆ Mat Worker, Air Traffic Mgr, FSS
- ◆ Tim Berg, GAA
- ◆ Ron Dearborn, GAA
- ◆ Pete Van Dehei, GAA

Float Pond Working Group

- ◆ Merle Jantz, GAA Vice President
- ◆ Guest Participants:
 - ◆ Rod Combellick, GAA President
 - ◆ Dan Brady, Runway Safety Program Mgr.
 - ◆ Tom George, GAA, AOPA

Float Pond Working Group

KEY ISSUES

- ◆ Float Pond channel width change from 100' to 200'
- ◆ Review and agree to language/diagrams depicting controlled surface entire length (not width) of channel
- ◆ Review & discussion of A/C to decide if changes to buoys and other signs/markings are desired or warranted.

Float Pond Working Group

- ◆ **Item No. 1:** Float Pond channel width change from 100' to 200.' FAA requests this change to our pubs, in line with new guidance for channel width.
- ◆ **Recommendation:** Maintain current width of 100' width from the south bank to the north bank.

Float Pond Working Group

◆ **Item No. 2:** Review and agree to language/diagrams depicting controlled surface entire length (not width) of channel.

◆ **Recommendation:**

Float Pond Working Group

◆ Supplement

The float pond waterway is a controlled surface; aircraft must remain out of the area until authorized by Fairbanks Tower on 118.3. Touchdown reference buoys, 500 feet from the north and south shores mark area approximately 5400 x 100 feet. The float pond waterway extends from the eastern most touchdown reference buoys to the west shore and from the north to the south shore. The area east of the eastern most touchdown reference buoys is outside of the float pond waterway and is uncontrolled; aircraft may taxi in this area at pilot's discretion, however, pilots should contact tower as soon as practical after startup. Step taxing prohibited outside of controlled surface. Limited transient floatplane parking available contact OPS 907-474-2530. Surface frozen in winter, not monitored. Migratory birds in the vicinity of airport during spring thru fall.

Float Pond Working Group

◆ Pilot Bulletin

◆ FAIRBANKS FLOAT POND OPERATIONS

The float pond waterway is a controlled surface; aircraft must remain out of the area until authorized by Fairbanks Tower on 118.3. Touchdown reference buoys 500 feet from the north and south shores mark an area approximately 5400 x 100 foot. The float pond waterway extends from the eastern most touchdown reference buoys to the west shore and from the north to the south shore (see map). The area east of the eastern most touchdown reference buoys is outside of the float pond waterway and is uncontrolled; aircraft may taxi in this area at pilot's discretion, however, pilots should contact tower as soon as practical after startup.

Float Pond Working Group

◆ Pilot Bulletin – Contin.

Step taxing is prohibited outside of the controlled surface. Limited transient floatplane parking is available. Contact OPS 907-474-2530. Surface is frozen in winter and not monitored. Migratory birds are common in the airport vicinity during spring thru fall.

For RADAR services departing Fairbanks, contact clearance delivery. VFR aircraft receiving this service will be assigned a "TRSA departure" (see page????), unless a pilot request is made otherwise.

Float Pond Working Group

◆ Pilot Bulletin – Contin.

When operating in the traffic pattern, the Tower will assign left or right hand traffic. The controller will often wait until an aircraft is in the upwind leg to assign a crosswind turn. Use caution before beginning a crosswind turn, due to the proximity of parallel runways either side of the float pond. Query ATC if you are unsure.

Float Pond Working Group

◆ **Item No. 3:** Review and discussion of A/C 150/5395-1A to decide if changes to buoys and other signs/markings are desired or warranted in conjunction with a future project.

◆ **Recommendation:**

Float Pond Working Group

1. Existing marker buoys – no change.
2. Install “Controlled Access Sign” on the south and north bank aligned with the eastern most buoys. The sign should large enough to be readable from a float plane cockpit at several hundred feet.



Float Pond Working Group

3. Install 2W/20W marker sign on the south and north bank aligned with the eastern most buoy alongside or under #2 above



4. Consider testing a prominently visible marker on the south and north bank aligned with the eastern most buoys to provide visual assistance to help pilots determine the line between "controlled" and "uncontrolled" surfaces.

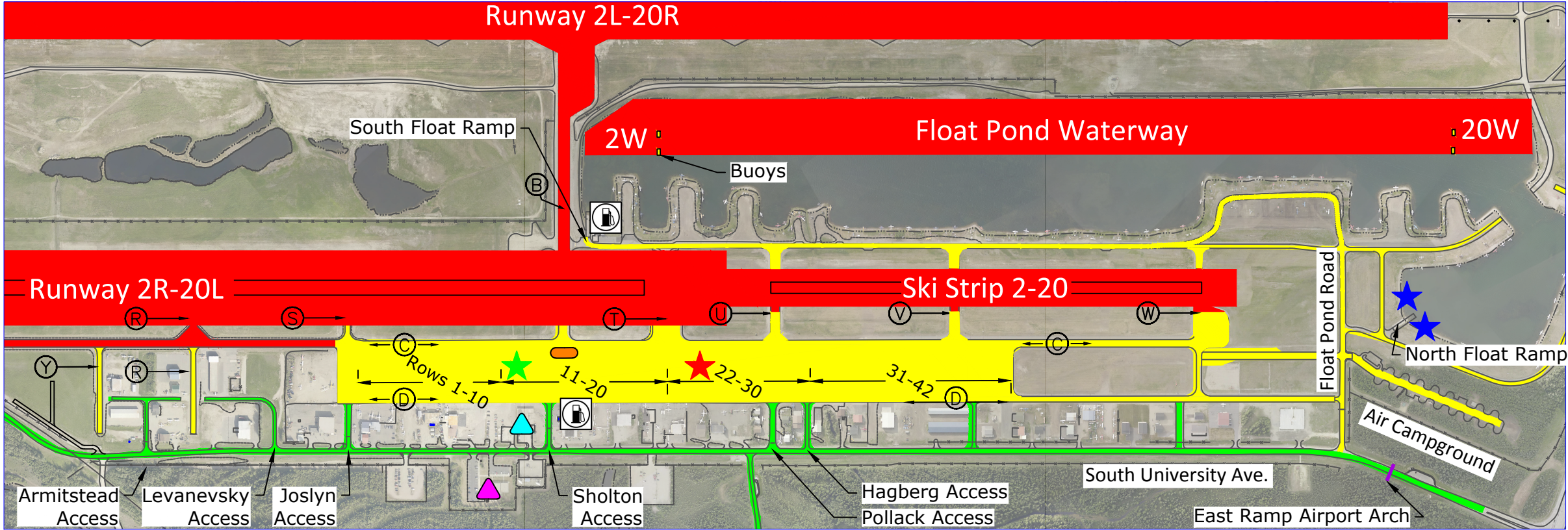
Float Pond Working Group

5. No additional in-water markers or buoys.
6. The current sign(s) at the float pond launch ramps are inconsistent with the Working Group recommended text contained in Item #2. Recommend modification to the last line – suggest “ASAP AFTER STARTUP”.



KNOW BEFORE YOU GO!

For Additional Information: Contact FAI Operations 474-2552



Legend

- **Tower Clearance Required** – Any access to the surfaces depicted in RED requires clearance from the tower, (Aircraft Use Only). These surfaces are marked with red hold signs and yellow hold lines painted across access points. Do not cross without tower clearance. Entering these areas without clearance will result in severe penalties and could cause an aircraft accident.
- **Aircraft Operations Area.** Use extreme caution in areas depicted in Yellow. Aircraft always have the right of way and may be behind you. Always take the most direct route to your destination. Maximum Speed Limit is 20 mph. Taxiway Delta is NOT to be used as a vehicle roadway. Except for short distances, use University Avenue.
- **Public Access Roads** are depicted in Green.
- Aircraft Fuel (Self Service)
- FAA Control Tower
- FAA Flight Service Station
- Taxiway
- Island with Elevated Lights
- Transient Aircraft Parking
- Non-Electrical (Rows 11-14)
- Electrical South Side of Row 23
- Float Pond (Water Spaces: T1-T4
Land Spaces: 160-163)

KEEP AN EYE ON FAI

Report Suspicious or Unauthorized Activity

(907) 474-2530 or 911

Float Pond Working Group

Contact: merle@Jantz.net